



INSTALLATION INSTRUCTIONS

NEOSHADE – OPEN ROLL

1. MOUNT THE BRACKETS

Determine the proper position for each bracket. The outside brackets should be no further than 2" from the ends of the headrail. The brackets should be securely mounted and equally spaced for the width of the NeoShade. Install the brackets with the release tab closest to the window or wall as in figure 1. All screws should be securely fastened to a sturdy structure. It is important that the brackets be mounted level and aligned to each other. Shimming may be required. Attach using two screws.

NOTE: The standard mounting brackets provided are as follows: 2 for widths up to 60", 3 between 61" to 84".

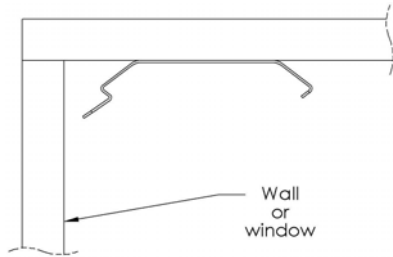
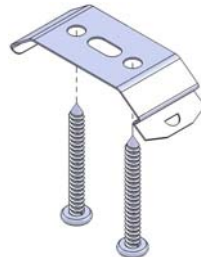


Figure 1.



Ceiling/inside mount

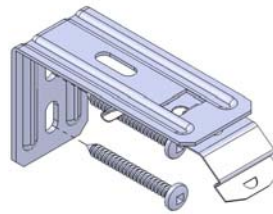


Fig. 3 Wall/outside mount

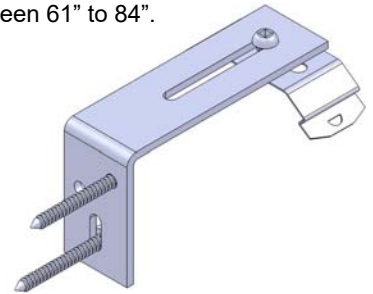


Fig. 4 Lateral mount

2. INSTALL THE SHADE

First determine roll direction. Either regular roll or reverse roll as in figure 7.

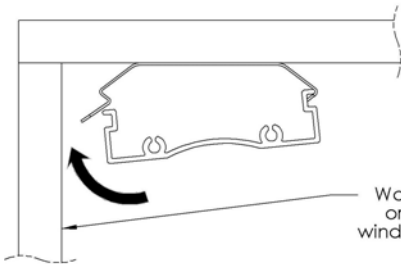


Fig. 5 NeoShade™ 1"

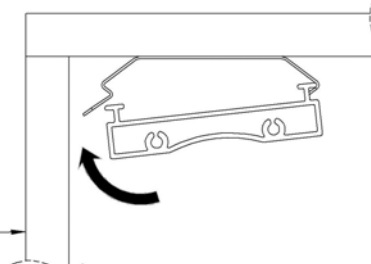
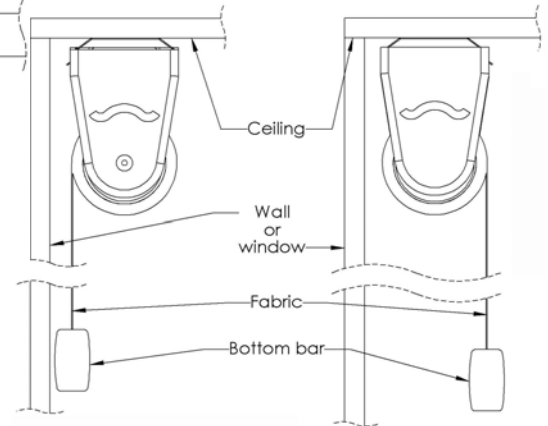


Fig. 6 NeoShade™ 1.5"

Insert the front edge of the headrail onto the top of each mounting bracket as shown in the figure above. Push upward until the back edge of the headrail snaps into the release tab of the mounting brackets.



Regular roll

Reverse roll

Figure 7

3. OPERATE THE SHADE

To lower the shade, gently pull down on the shade until you reach the desired position. To raise the shade pull down the bottom bar of the shade and release. It will rise on its own.

4. TO REMOVE THE SHADE

Insert a flathead screw driver in between the headrail and release tab. Gently twist the screwdriver and pry open the bracket.

5. ADJUSTING THE TENSION

If your shade has a tension adjuster you can adjust the tension of the internal spring by inserting the pin of the adjuster in the hole of the lateral bracket and twist left or right until you reach the desired tension.