

# SG RECHARGEABLE MOTOR Programming Instructions

30/11/2018

## TECHNICAL SPECIFICATIONS

### MOTOR INFORMATION



1. ENSURE MOTOR IS PROTECTED. ANY DAMAGES DURING TRANSPORTATION, STORAGE, INSTALLATION OR MISUSE CAN CAUSE THE MOTOR TO NOT WORK PROPERLY.
2. CHARGE THE MOTOR EVERY 6 MONTHS TO ENSURE OPTIMAL PERFORMANCE.
3. IF THE BATTERY CHARGE IS AT A LOWER LEVEL, THE MOTOR WILL BEEP 10 TIMES TO PROMPT THAT IT NEEDS TO BE CHARGED.
4. MAXIMUM RUNNING TIME OF THE MOTOR IS 6 MINUTES WITHOUT LIMITS. MOTOR WILL BE ASLEEP AFTER SIX MINUTES HAS PASSED. MOTOR WILL STILL BE IN WAKE UP/ PROGRAMMING MODE ONCE THE MOTOR HAS RESTARTED.

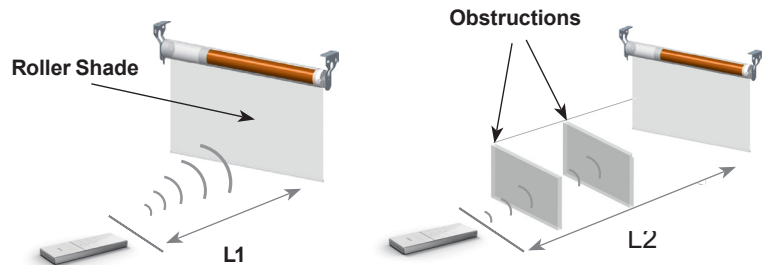
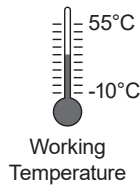


Programming resides with the motor. Each motor can store up to 20 copied channels.

### CONTROL RANGE

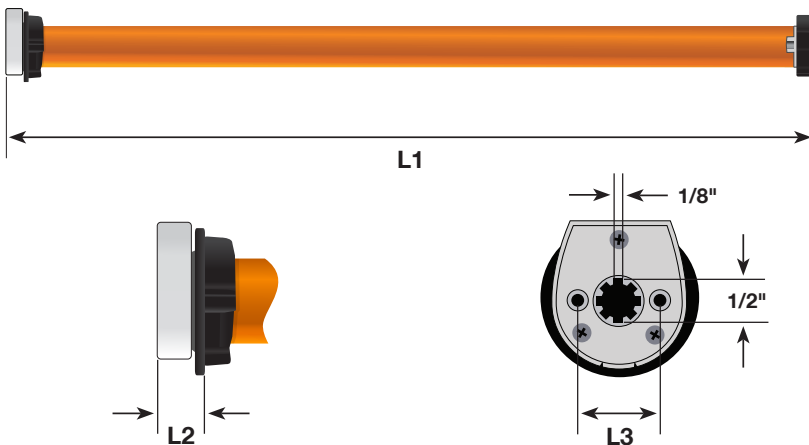


SIGNAL STRENGTH AND RANGE MAY VARY DEPENDING ON THE ACTUAL ENVIRONMENT.



	L1 Open Area	L2 With Obstructions	Emission Frequency
8V/12V	200m	35m	433.92/868 MHz

### MOTOR DIMENSIONS



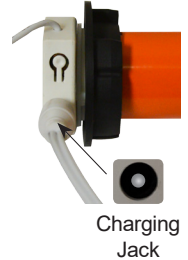
Motor Types	L1	L2	L3
12V DH409, DL485	25 1/2"	1/2"	1 3/16"
8V DH241, DL265	17"	1/2"	13/16"
8V DH338, DL386	17"	1/2"	13/16"



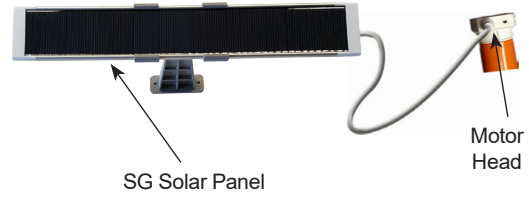
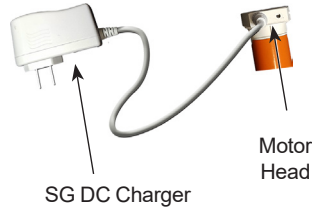
# TECHNICAL SPECIFICATIONS (CONTINUED)

## RECHARGING THE MOTOR

To recharge the motor's battery, connect the SG DC charger to the **motor head charging jack** and plug the charger into a standard electrical outlet. When the battery is fully charged, the indication light on the charger will switch from red to green. You can also use the SG Solar Panel to keep the battery constantly charged while exposed to sufficient sunlight.

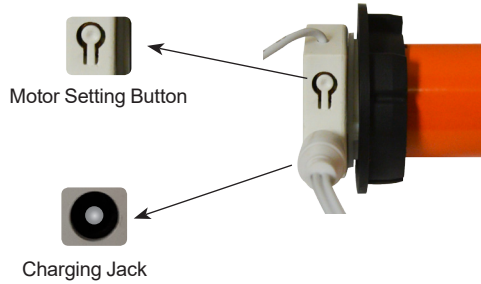


**IF PURCHASING MORE THAN ONE CHARGER, PLEASE ENSURE THE OUTPUT VOLTAGE ON THE CHARGER AND MOTOR MATCH.**

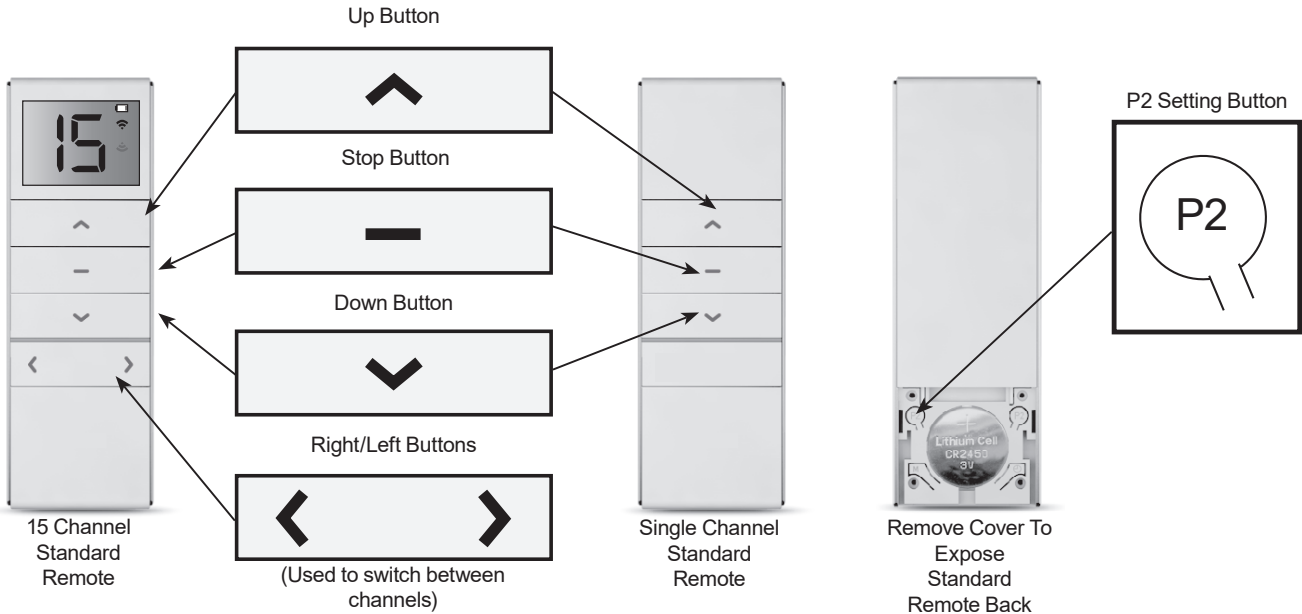


## BUTTON INFORMATION

### MOTOR BUTTON LAYOUT



### REMOTE BUTTON LAYOUT



**STEP 1: PREPARING FOR PROGRAMMING**



**BEFORE YOU BEGIN:**

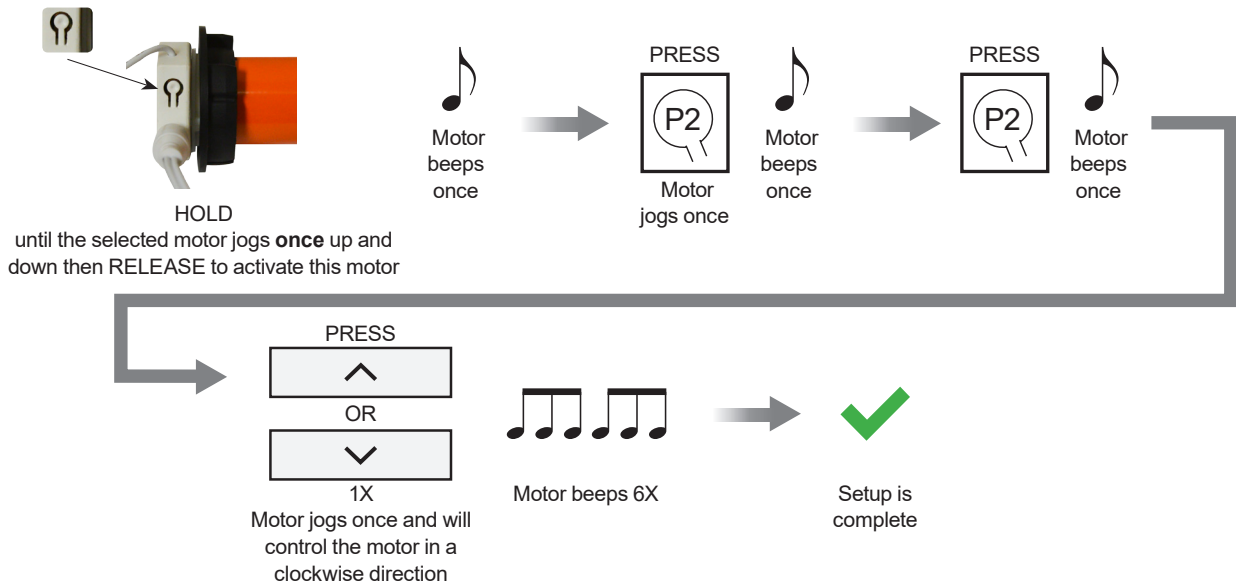
1. As a standard, motors are shipped in factory default mode without limits set.
2. Channel "0" cannot be programmed on a multi channel remote. It is intended to be a master channel for all motors.
3. On a 15 channel remote, select the intended channel before activating wake-up mode, basic or advanced program settings.

**WAKE-UP MODE** (Must Be Done Before Basic & Advanced Programming)

Required to make the connection between the remote channel and the motor. **During each of the following settings the time between each operation must be shorter than 10 seconds, otherwise the program will be canceled, and the motor will be back in default mode.** Follow the steps below to wake-up the motor.



**NO ASSIGNED LIMITS IN WAKE-UP MODE.**



Test shade direction using the **up or down buttons**. Use the **stop button** to prevent shade fabric and bottom bar from crashing into the valance or unrolling from the tube.

**CHANGING MOTOR DIRECTION**



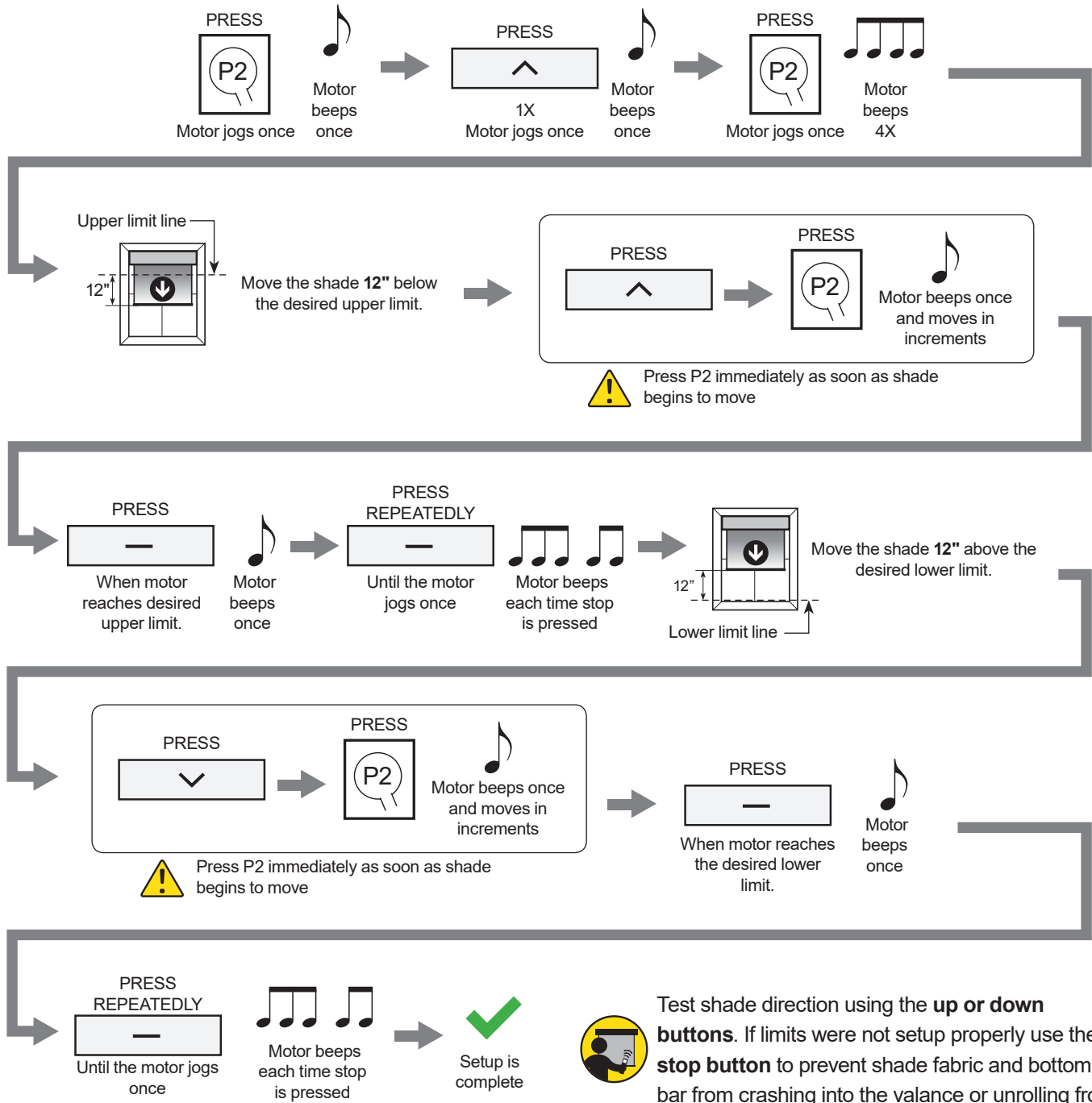
Test shade direction using the **up or down buttons**. Use the **stop button** to prevent shade fabric and bottom bar from crashing into the valance or unrolling from the tube.

## STEP 2: BASIC PROGRAMMING

### SETTING MOTOR LIMITS

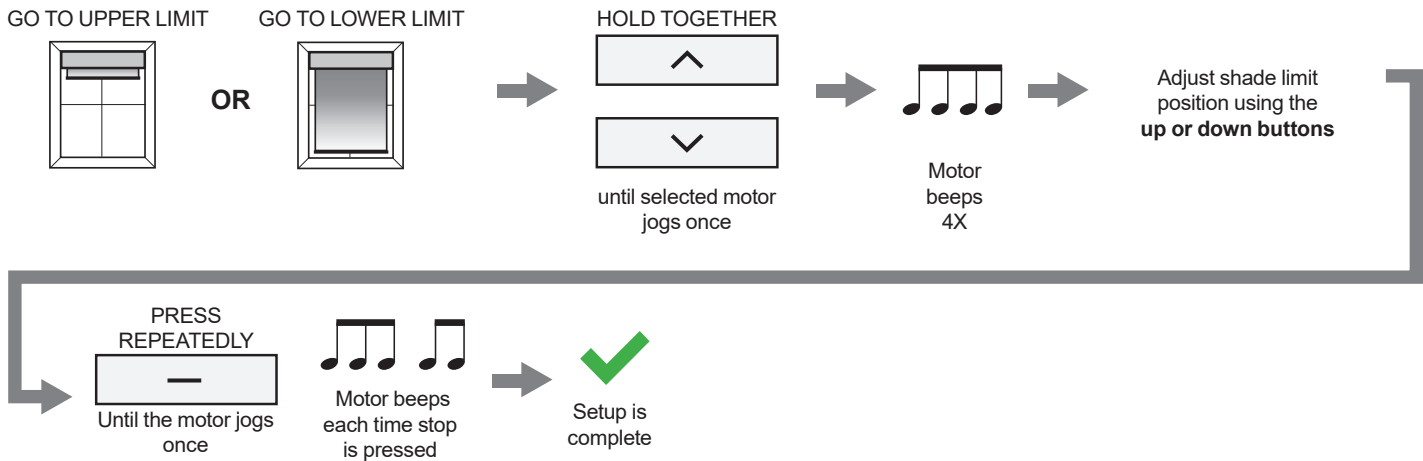
Allows you to set two positions: the upper and lower limits. This can be applied to each shade per channel.

**During limit setting, the time between two operations must be shorter than 2 minutes, otherwise the program will be cancelled, and the motor will be back in wake-up mode. Follow the steps below to set motor limits.**



## STEP 3: ADVANCED PROGRAMMING

### ADJUSTING LIMITS

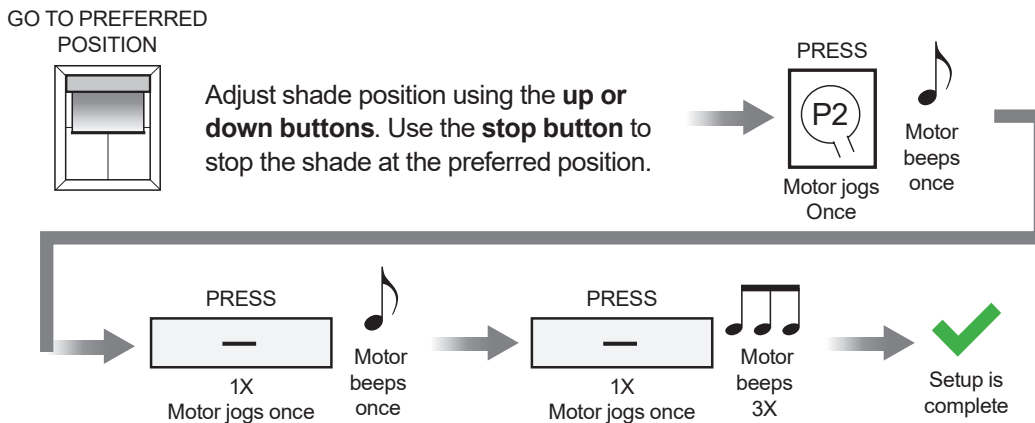


### SETTING A PREFERRED POSITION

Allows you to set a third limit position for the shade per channel. Follow the steps below to set or delete a preferred position.



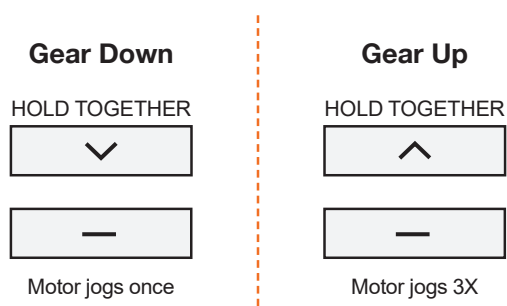
**WHILE IN TILT FUNCTION SHADE WILL GO TO LOWER LIMIT FIRST AND THEN PROCEED TO THE PREFERRED POSITION.**



When setup is complete, hold the **stop button** to go to the preferred shade position. Follow the steps above to program different preferred positions to separate channels on a 15 channel remote.

### SPEED ADJUSTMENT

Each motor has three speeds. To move between the different speeds, follow the diagram below.

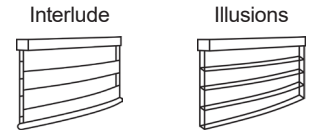


**STEP 3: ADVANCED PROGRAMMING (CONTINUED)**

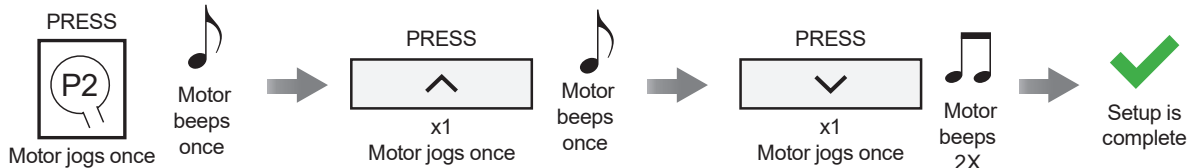
**SETTING OR REMOVING TILT MODE**

Tilt mode is used to move the shade in small increments for fine adjustment. It is most effective when programmed with a standard remote (button remote). Follow the steps below to set the shade in tilt mode or remove shade from tilt mode.

Recommended with Interlude or Illusions shades.



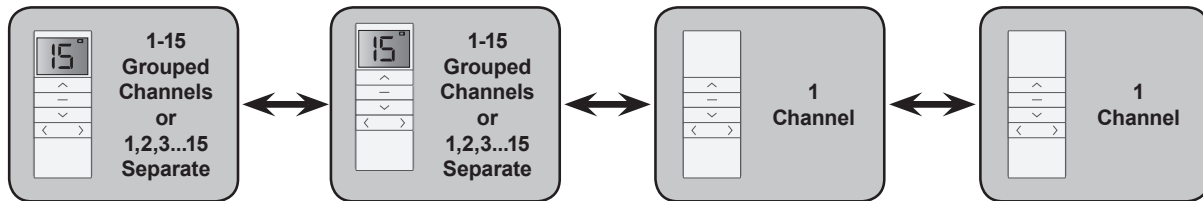
**TILT MODE WILL REMAIN ACTIVE IN ALL MODES (EXCEPT STEP 2: BASIC PROGRAMMING) UNLESS REMOVED**



When setup is complete press the **up or down buttons** repeatedly for fine adjustment. To move shade automatically, hold the **up or down buttons** and release once the shade begins to move.

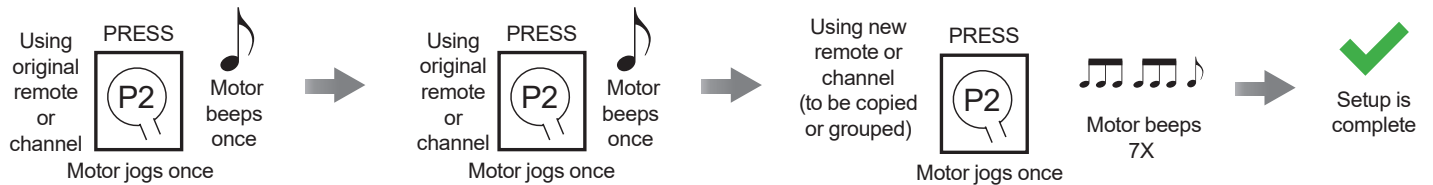
**COPYING, DELETING OR GROUPING WITH A REMOTE**

The remote scenario chart below outlines different ways to copy, delete or group channels using separate remotes.



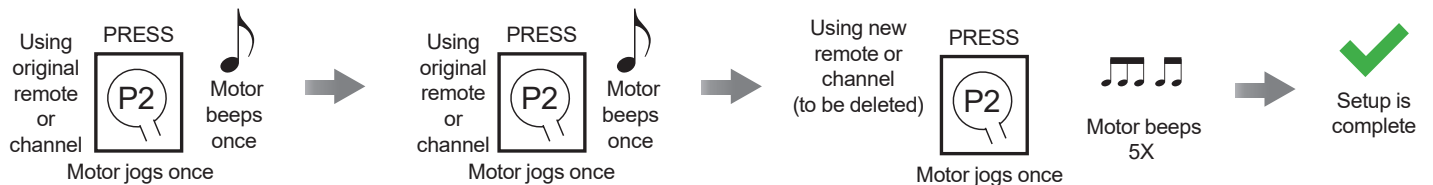
Separate channels can also be programmed this way within one 15 channel remote. Follow the steps below to copy, delete or group channels.

**COPYING/GROUPING CHANNELS**



**DELETING CHANNELS**

Note: this only works on previously copied/grouped channels.



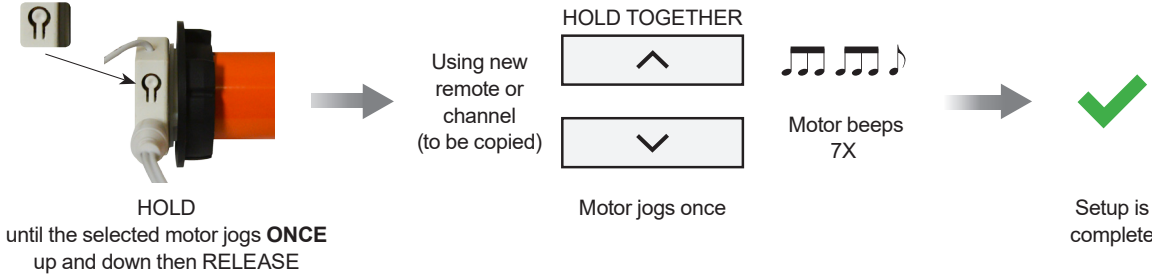
**STEP 3: ADVANCED PROGRAMMING (CONTINUED)**

**COPY FROM A PROGRAMMED MOTOR**

Use the steps below to copy a pre-programmed motor to a remote.



**DELETING OR TRANSFERRING GROUPS OF MOTORS CAN ONLY BE DONE WITH A REMOTE.**



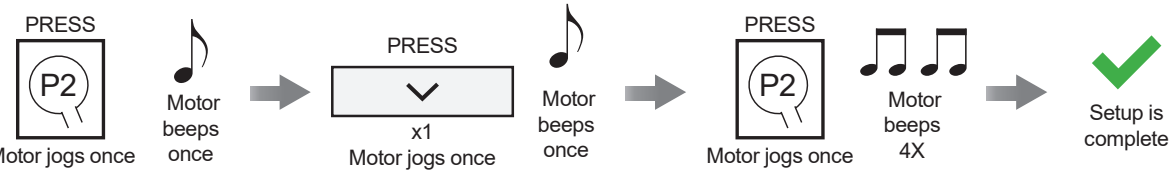
**DELETING ALL MOTOR LIMITS**

This mode is used to delete all the limits setup in the motor using the originally programmed remote. Follow the steps below to delete all the motor limits.



**AFTER ALL LIMITS ARE DELETED, THE MOTOR WILL DEFAULT BACK TO WAKE-UP MODE. PREFERRED LIMITS WILL ALSO BE DELETED.**

**ALL COPIED CHANNELS ON OTHER REMOTES ARE SYNCED AND UPDATED WITH THE ORIGINAL MOTOR UNLESS DELETED.**

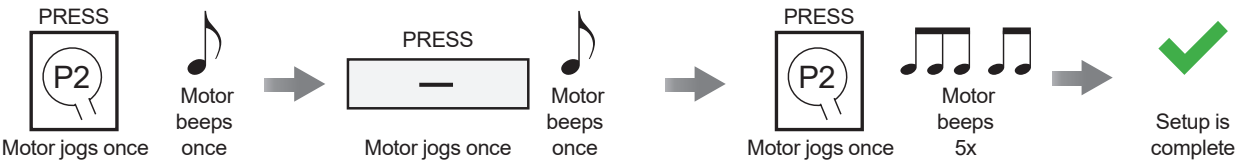


**DELETING ALL REMOTES/CHANNELS**

This mode is best used for reconfiguring a remote without wiping the limits from a motor's memory. Follow the steps below to remove all remotes/channels.



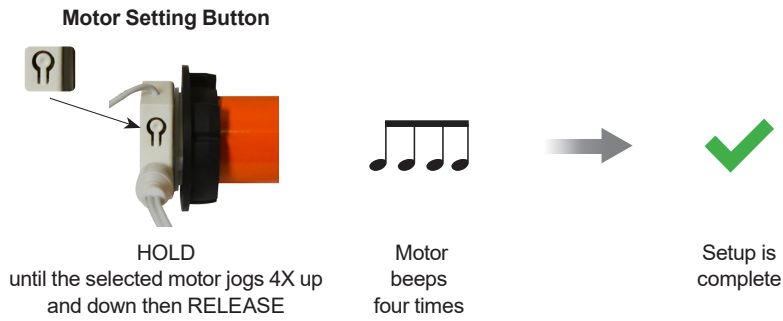
**LIMITS RESIDE IN THE MOTOR AND CAN BE TRANSFERRED BACK TO REMOTES/CHANNELS USING THE "COPY FROM A PROGRAMMED MOTOR" INSTRUCTIONS ON THE PREVIOUS PAGE.**



**STEP 3: ADVANCED PROGRAMMING (CONTINUED)**

**MOTOR RESET**

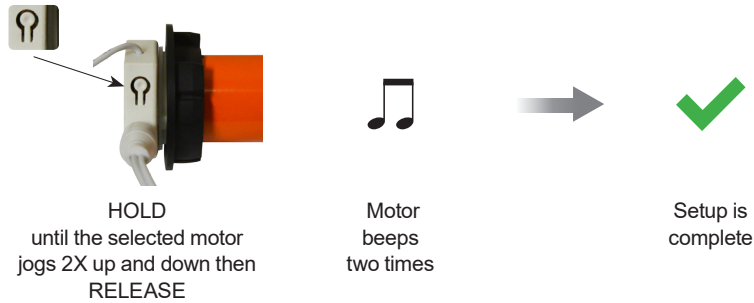
The motor factory reset mode will wipe all transmitters/remotes. Only do this if necessary.



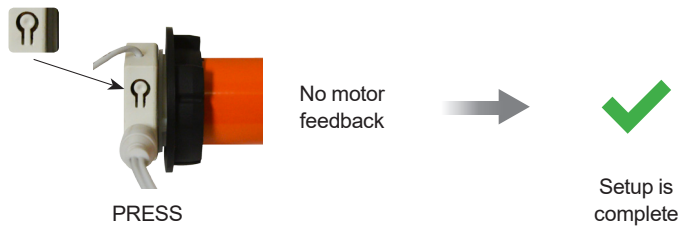
**MOTOR SHIELDING**

The mode allows a motor's wireless radio signal to become temporarily disabled to save the battery life.

**DISABLE SIGNAL:**

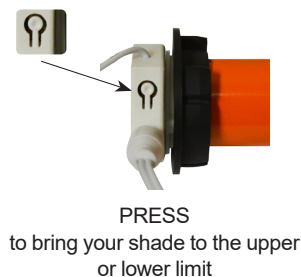


**ENABLE SIGNAL:**



**OPERATING SHADE AT MOTOR HEAD**

This mode allows you to operate the shade in the event that the remote goes missing or is lost.



**Note:** pressing the motor setting button while the shade is moving can also stop the motor.