

CS SERIES

PERFORMANCE SUNSCREEN

SG CS SERIES

STYLES

CS 101 1%, CS 103 3%,
CS 105 5%, CSR 103 3%



CS 101 1% - 1 WHITE



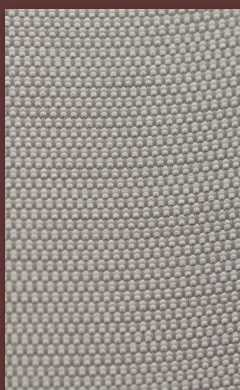
2 BEIGE



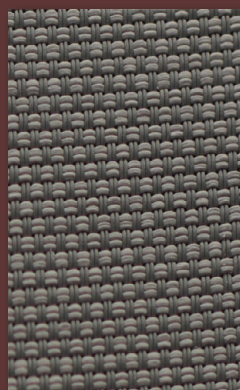
92 DARK BEIGE



CS 103 3% - 1 WHITE



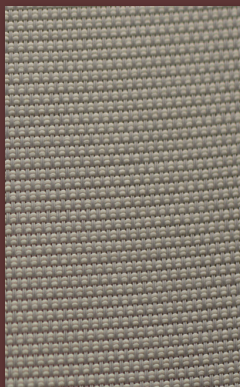
4 LIGHT GREY



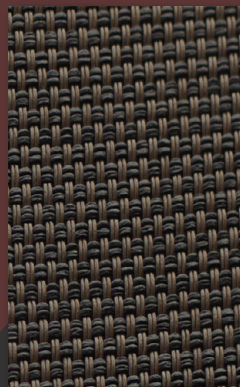
5 DARK GREY



CS 105 5% - 1 WHITE



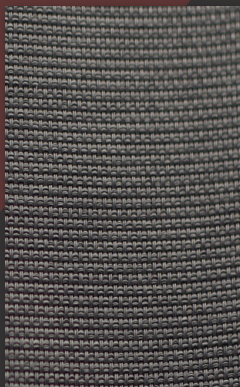
34 TAUPE



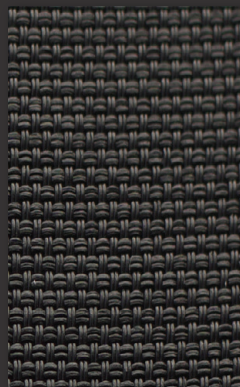
6 BROWN



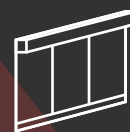
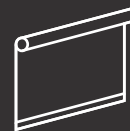
CSR 103 3% - 1 WHITE



95 CHARCOAL



90 BLACK





Sun Glow Window Covering Products of Canada Ltd.

www.mysunglow.com | (416) 266-3501 | 1 (800) 668-1728
50 Hollinger Road, Toronto, Ontario M4B 3G5

SG CS SERIES

STYLES

CS 101 1%, CS 103 3%,
CS 105 5%, CSR 103 3%

TECHNICAL SPECIFICATIONS

width	weight	thickness	fire retardancy
-------	--------	-----------	-----------------

SOLAR VALUES

colour	according to EN 410			SHGC
	T%	R%	A%	

SG CS 101 1%

118in 300cm	15.3 oz/yd ² 518 g/m ²	0.0268in 0.68mm	CAN/ULC-S109-3 NFPA 701 B1, M1, B2
composition: 25% polyester, 75% PVC			
openness factor: 1%			
bacteria resistance: ASTM G21, ASTM G22			
fabric count: 68 ends x 50 picks per inch ²			
colourfastness: grade 8			

1 white	15	67	18	0.33
2 beige	13	62	25	0.35
4 light grey	7	51	42	0.41
34 taupe	12	52	36	0.39
95 charcoal	0	6	94	0.66
92 dark beige	8	48	44	0.31
6 brown	0	6	94	0.67
5 dark grey	5	23	72	0.44
90 black	0	4	96	0.69

SG CS 103 3%

118in 300cm	13.1 oz/yd ² 445 g/m ²	0.0224in 0.57mm	CAN/ULC-S109-3 NFPA 701 B1, M1, B2
composition: 25% polyester, 75% PVC			
openness factor: 3%			
bacteria resistance: ASTM G21, ASTM G22			
fabric count: 54 ends x 46 picks per inch ²			
colourfastness: grade 8			

1 white	17	65	18	0.31
2 beige	16	55	29	0.39
4 light grey	10	43	47	0.45
34 taupe	8	39	53	0.47
95 charcoal	2	6	92	0.64
92 dark beige	12	52	36	0.41
6 brown	2	5	93	0.65
5 dark grey	5	23	72	0.56
90 black	2	4	94	0.67

SG CS 105 5%

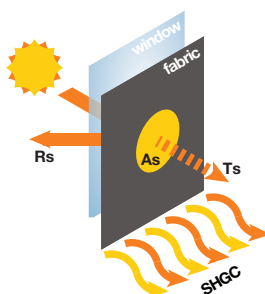
118in 300cm	12.4 oz/yd ² 420 g/m ²	0.0216in 0.55mm	CAN/ULC-S109-3 NFPA 701 B1, M1, B2
composition: 25% polyester, 75% PVC			
openness factor: 5%			
bacteria resistance: ASTM G21, ASTM G22			
fabric count: 47 ends x 47 picks per inch ²			
colourfastness: grade 8			

1 white	20	66	14	0.34
2 beige	19	56	25	0.41
4 light grey	12	44	44	0.47
34 taupe	11	40	49	0.49
95 charcoal	6	7	87	0.68
5 dark grey	8	24	68	0.58
92 dark beige	16	51	33	0.43
6 brown	5	6	89	0.69
90 black	5	5	90	0.69

SG CSR 103 3%

94in 240cm	12.97 oz/yd ² 440 g/m ²	0.0216in 0.55mm	CAN/ULC-S109-3 NFPA 701 B1, M1, B2
composition: 25% polyester, 75% PVC			
openness factor: 3%			
bacteria resistance: ASTM G21, ASTM G22			
fabric count: 54 ends x 46 picks per inch ²			
colourfastness: grade 8			

01 white	6	74	20	0.22
2 beige	6	73	21	0.23
4 light grey	6	73	21	0.23
95 charcoal	5	72	23	0.24
92 dark beige	6	72	22	0.23
6 brown	5	72	23	0.24
90 black	5	72	23	0.24



Thermal Efficiency & Solar Heat Gain Coefficient (SHGC)

When sunlight hits a window some of the solar energy is transmitted through (Solar Transmittance **T%**), some is reflected back (Solar Reflectance **R%**) and some is absorbed by the glass and sun screen (Solar Absorption **A%**). Some of the absorbed heat will flow into the building. **SHGC** represents the amount of solar energy that penetrates the glass and fabric. Values closer to 0 indicate more effective blockage of solar heat entering the building.

Visual Transmittance (T%)

The percentage of total visible solar energy passing through a sun control fabric. The higher the number, the more visible light will penetrate into the interior, the greater the glare.

Visibility

Darker colours have a lower **T%** value, and a higher **A%** value, providing better outward visibility.