



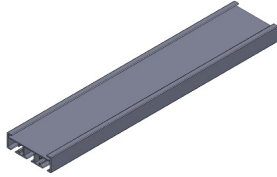
Panel Track



Panel Track

Specifications and Configurations

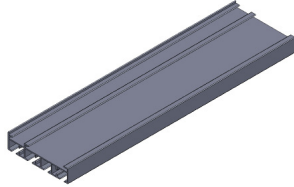
3 Channel Track



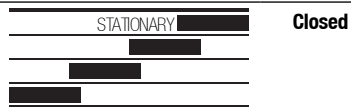
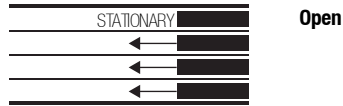
3 Panels - One Way (Open Right Shown)



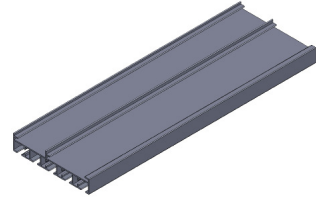
4 Channel Track



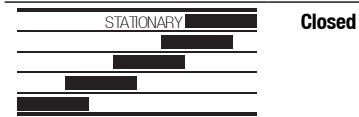
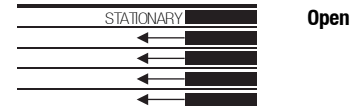
4 Panels - One Way (Open Right Shown)



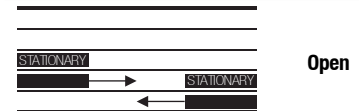
5 Channel Track



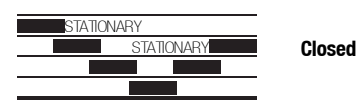
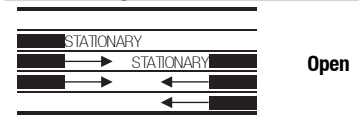
5 Panels - One Way (Open Right Shown)



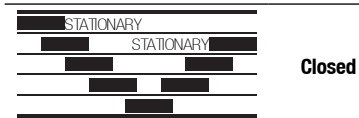
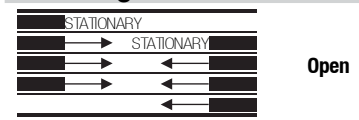
4 Panels - Center Split using 5 channel track



6 Panels - Center Split using 5 channel track



8 Panels - Center Split using 5 channel track



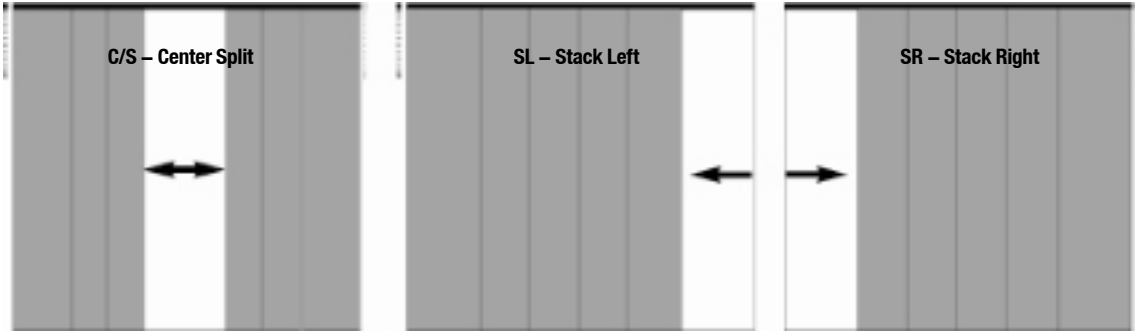
Note: Please contact our technical department for areas requiring more than 8 panels, or other special configurations not shown here



Panel Track

Specifications and Configurations

Control and Opening Location



Note: 5 Channel Track is required for all centre split applications.

Panel Sizing

Panel Width Calculation

Panels overlap by approximately 2". The minimum panel width is 16" and the maximum panel width is 48". To determine the approximate width of each panel, divide the total width of the panel track system by the number of panels and add the following:

1" for 3 panels	1 1/2" for 6 panels
1 1/4" for 4 panels	1 5/8" for 8 panels
1 3/8" for 5 panels	

Panel Height Calculation

Sun Glow will deduct 1/2" from the height of the panel track when "tight" measurement is specified on the order form. No deductions are taken on "finished" measurements. When using "finished" measurements, Sun Glow recommends a height deduction of a minimum of 1/2" in order to accommodate uneven floors and ceilings.

Option: Decorative No Sew Bar



No Sew Bar \$5/ft. (no minimum order quantity). Order Code: RM
Pricing: \$5/ft. (rounded up to closest foot) x # of panels x # of rows of No Sew Bar.

Panel Track Pricing Notes

- All Panel Tracks include track, fabric panels, side or centre split, control wand, mounting brackets, and choice of bottom bar.
- Please refer to the "Panel Width Calculation" above to determine the approximate width of the panels.
- Prices are for shade only. Applicable motor options and controls must be added to these prices.



Panel Track Mounting Details

Ceiling Mount

	Locked in the Back (Fig. 1)			Locked in the Front (Fig. 2)		
	A	B	C	D	E	F
3 Channel	2 1/32" 52mm	2 3/8" 60mm	11/16" 18mm	2 1/32" 52mm	1 1/4" 32mm	11/16" 18mm
4 Channel	2 3/4" 70mm	2 3/8" 60mm	11/16" 18mm	2 3/4" 70mm	2" 51mm	11/16" 18mm
5 Channel	3 1/2" 87mm	2 3/8" 60mm	11/16" 18mm	3 1/2" 89mm	2 5/8" 67mm	11/16" 18mm

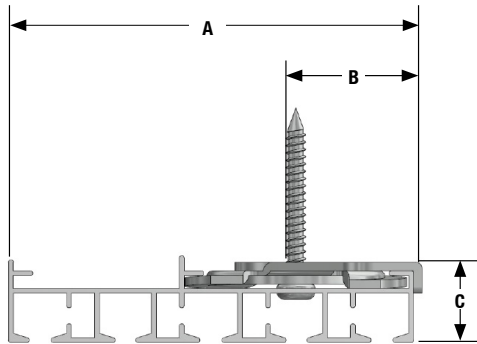


Figure 1

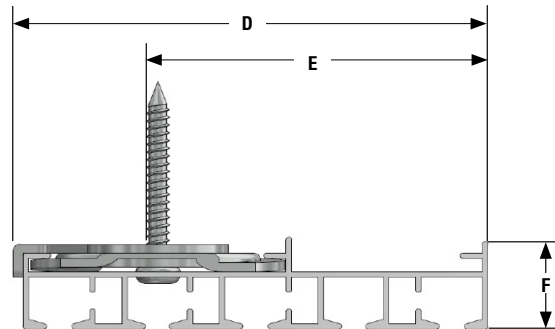


Figure 2

Wall Mount

	Locked in the Back (Fig. 3)				Locked in the Front (Fig. 4)			
	G	H	I	J	K	L	M	N
3 Channel	2 11/16" 68mm	1 5/8" 41mm	1 13/16" 46mm	3/4" 19mm	3 5/8" 92mm	2" 51mm	2 3/8" 60mm	1.5" 38mm
4 Channel	3 7/16" 87mm	1 5/8" 41mm	1 13/16" 46mm	3/4" 19mm	3 1/2" 89mm	2" 51mm	2 3/8" 60mm	3/4" 19mm
5 Channel	4 1/8" 105mm	1 5/8" 41mm	1 13/16" 46mm	3/4" 19mm	4 1/2" 114mm	2" 51mm	2 3/8" 60mm	1 1/16" 27mm

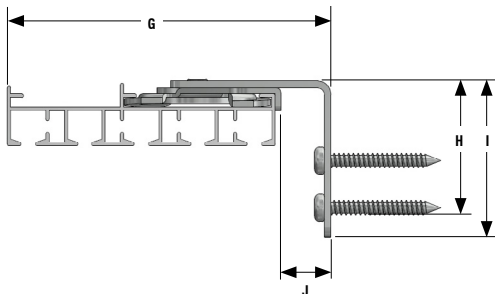


Figure 3

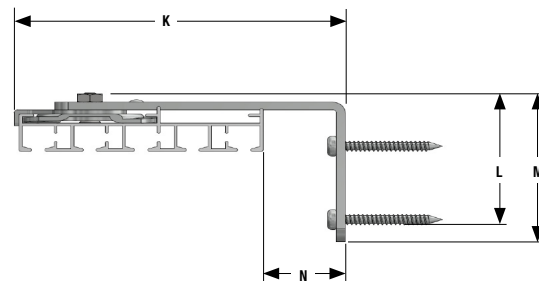


Figure 4



Motorized Panel & Drapery Track



Panel Track

Panel Track and Drapery Motorization

Motor & Track

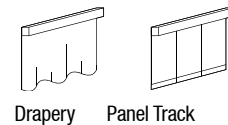
Item/Option Name	Order Code	96"	108"	120"	132"	144"	156"	168"	180"	192"	204"	216"	228"	240"	252"	264"	276"
Glydea Ultra 35e RTS (120V AC 50/60Hz)	GTU35	2480	2525	2600	2650	2695	2740	2820	2865	2975	3020	3115	3145	3235	3270	3300	3330
Glydea Ultra 60e RTS (120V AC 50/60Hz)	GTU60	2850	2900	2975	3020	3070	3115	3195	3240	3345	3395	3485	3520	3610	3640	3675	3705
Glydea Ultra 35e Zigbee (120V AC 50/60Hz)	GTUZ35	3057	3100	3159	3197	3240	3278	3321	3365	3456	3494	3554	3575	3635	3662	3683	3710
Glydea Ultra 60e Zigbee (120V AC 50/60Hz)	GTUZ60	3402	3446	3505	3543	3586	3629	3667	3710	3802	3840	3899	3921	3980	4007	4029	4056
Irismo 35 Mini DC RTS (24V DC) (includes power supply)	I35	2115	2160	2235	2285	2330	2375	2455	2500	2610	2655	2745	2780	2870	2905	2935	2965
Irismo 45 Wirefree RTS (26.5V DC Li-ion) (charger sold separately)	I45	2645	2695	2770	2820	2865	2910	2990	3035	3140	3190	3280	3315	3405	3440	3470	3500
Irismo 45 Wirefree RTS Charging Adapter (note: 1 charger supports multiple Irismo 45 motors)	I45CH	\$325															

Ripple Fold Option

Item/Option Name	Order Code	96"	108"	120"	132"	144"	156"	168"	180"	192"	204"	216"	228"	240"	252"	264"	276"
80% Ripple Fold	RF8	48	54	60	66	72	78	84	90	96	102	108	114	119	125	131	137
100% Ripple Fold	RF10	58	72	86	100	115	129	143	158	172	186	200	215	229	243	258	272
120% Ripple Fold	RF12	67	74	81	89	96	103	110	117	124	131	139	146	153	160	167	174

The pricing shown above includes track made to your measurements:

- Includes pinch pleated track (Order code: PPT) or made to motorized panel tracks (Order code: MPT) in split or side draw.

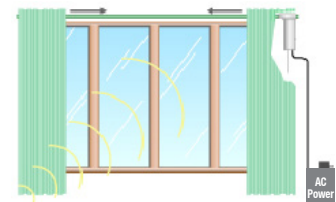


Additional Options:

- 3 pinch pleated carriers provided per ft. For extra carriers (Order code: EX# – where # is the quantity of extra carriers you require) – Add \$5.00 per carrier.
- Ripple fold carriers are available in split or side draw.
- Bent tracks add \$450 per bend – Tracks will be split.
 - 45 degree bend (Order code: BT45)
 - 90 degree bend (Order code: BT90)

Notes:

- Track and motor available in white finish only.
- Tracks over 96" wide will incur additional freight.
- For bent tracks, a template or diagram must be sent along with the order form for clarification.

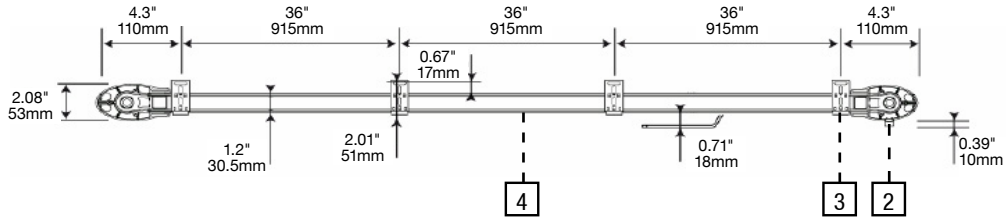




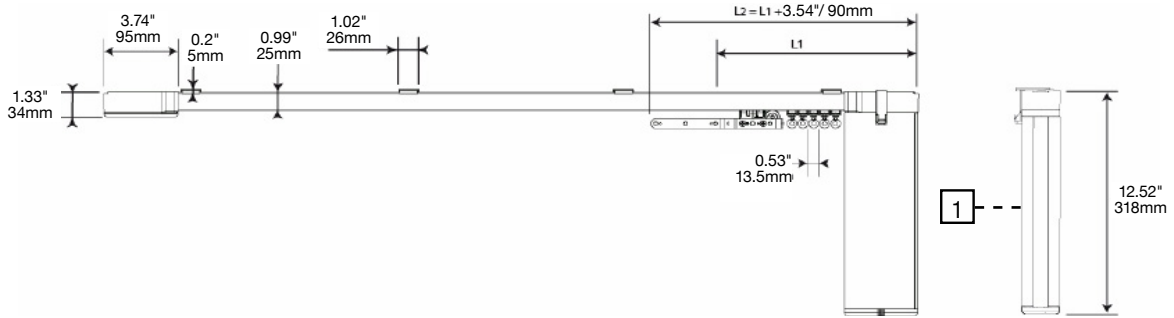
Panel Track

Panel Track and Drapery Motorization

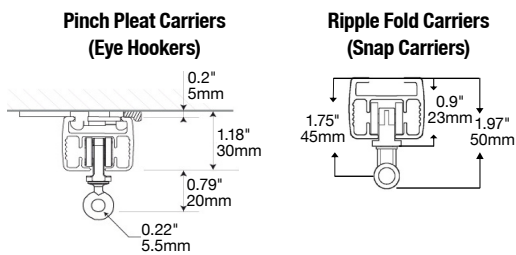
Top View



Side View



Cross Section



Parts

- | | |
|---------------------|--------------|
| 1: Motor | 2: Track End |
| 3: Mounting Bracket | 4: Headrail |