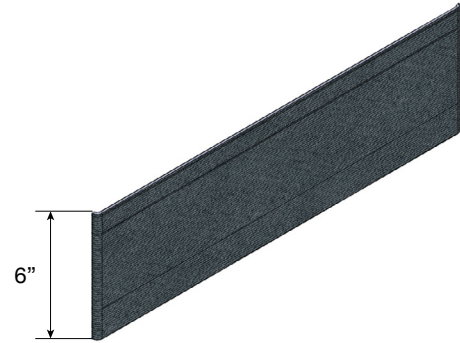




# Roller Shades

## Valance Option: Fabric Valance



### Features & Benefits

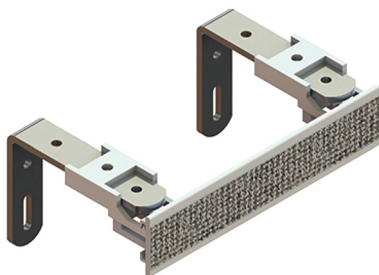
- Can be used with Open Roll Roller Shades.
- Standard is 6" (height) but custom sizes can be accommodated.
- Available with or without returns. Standard return is a 3.5" projection with a 3" wall bracket. 4", 5", and 6" wall brackets also available.
- Bottom of valance is sewn and includes an aluminum slat insert.
- Valance width cannot exceed the maximum roll width of fabric selected, as any seaming will likely be visible (see [fabric specifications page](#)).
- Railroading is an option for some fabrics but not all. For patterned fabric, railroading the valance will result in a different look than that of the shade.
- Fabric Valances can be mounted with Velcro aluminum track using wall or ceiling brackets or with plastic Velcro angle for ceiling mounting only.



**LIGHT GAP MAY INCREASE** when width to height ratio is 1:2.5 or greater

### Mounting Options

#### Wall Mount Velcro Track



Brackets available in 3", 4", 5" and 6"  
3 1/2" return standard

#### Ceiling Mount Velcro Angle

