



SUN GLOW
ARCHITECTURAL
PRODUCT CATALOGUE

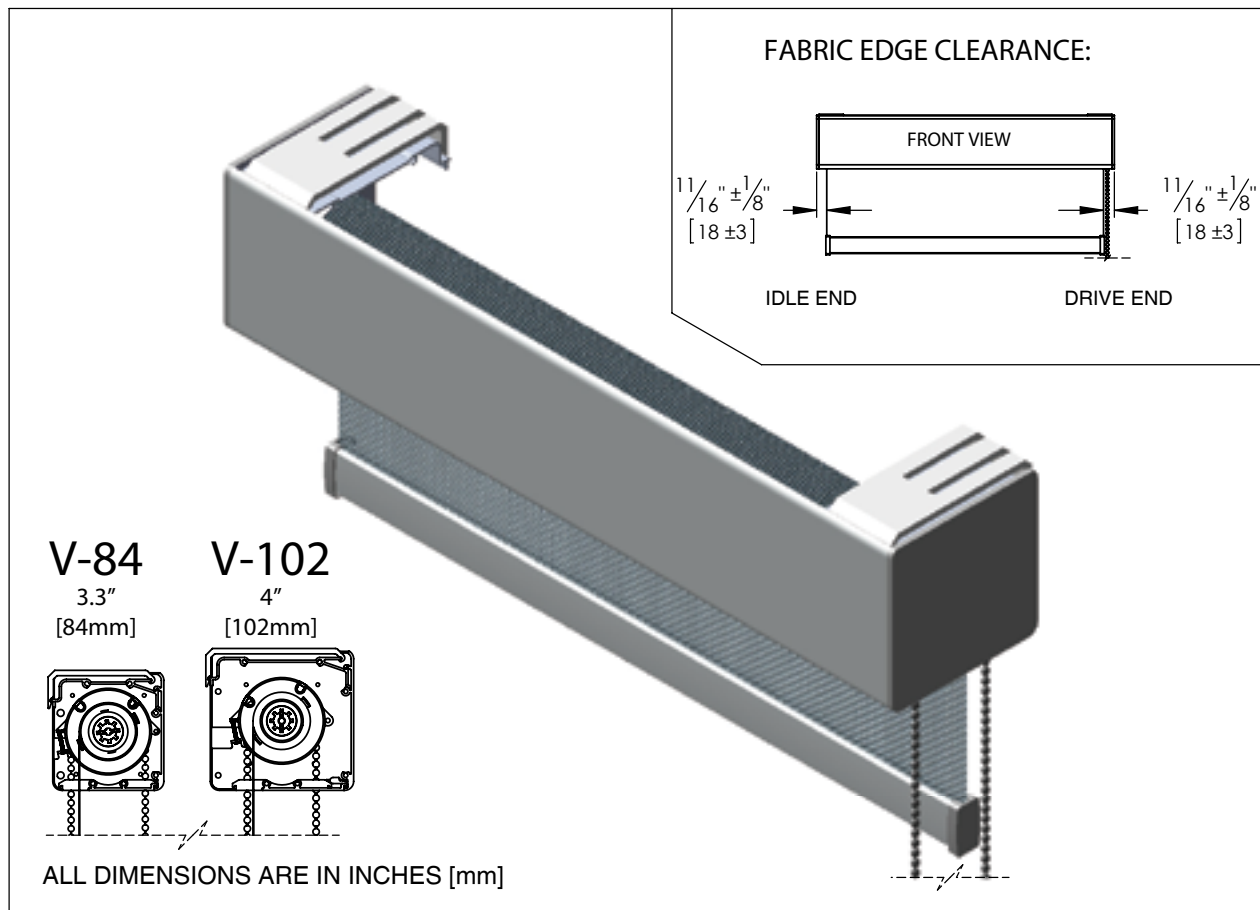
VISION ROLLER SHADE SYSTEMS



VISION™ ROLLER SHADE SYSTEMS

V-84 & V-102

Chain Operated System: Features & Benefits



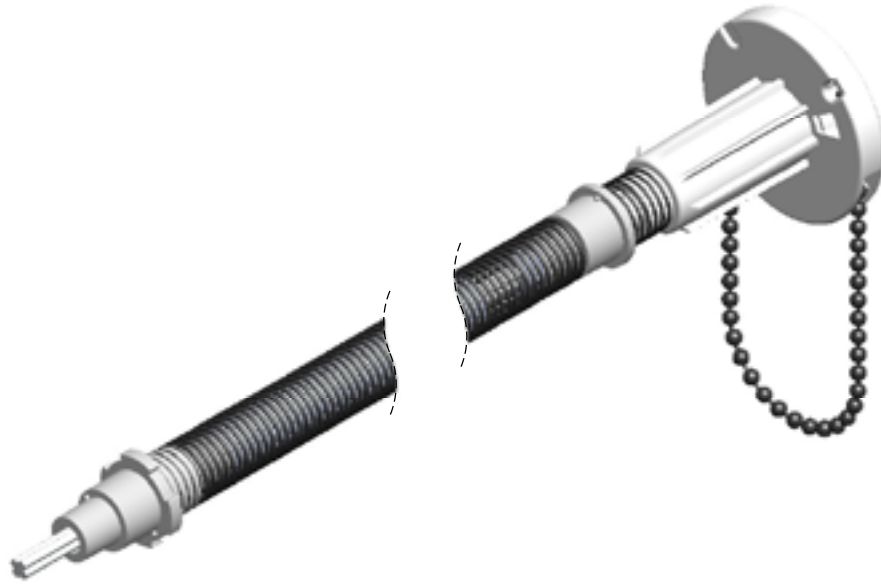
FEATURES				BENEFITS					
SNAP-ON BRACKETS				QUICK AND EASY INSTALLATION & REMOVAL WITHOUT DISMANTLING THE SHADE					
MODULAR DESIGN				WIDE VARIETY OF VALANCE CONFIGURATIONS FOR OPTIMAL PERFORMANCE & COST EFFECTIVENESS					
MINIMAL & SYMMETRICAL LIGHT GAP				OFFERS GREATER SOLAR CONTROL AND A BALANCED APPEARANCE					
LIFT ASSIST MECHANISM (LAM)				SPRING MECHANISM REDUCES THE PULL FORCE REQUIRED TO LIFT THE SHADE WHICH REDUCES WEAR AND TEAR ON THE COMPONENTS.					
COMPLETELY ASSEMBLED UNIT				SHADE IS BALANCED & TESTED DURING MANUFACTURING TO ENSURE PROPER PERFORMANCE BEFORE & AFTER INSTALLATION					
BUILT IN LEVELLING SYSTEM				DRIVE & IDLE ENDS CAN BE LEVELED AFTER INSTALLATION TO COMPENSATE FOR UNEVEN MOUNTING CONDITIONS					
STRIPLESS CLUTCH TECHNOLOGY				ALLOWS SHADE TO ALSO BE PULLED DOWN BY BOTTOM BAR					
VISION™ MEETS THE FOLLOWING LEED POINT CRITERIA				<ul style="list-style-type: none"> • MR CREDIT: 4.1/4.2 RECYCLED CONTENT • MR CREDIT: 5.1/5.2 REGIONAL MATERIALS • EQ CREDIT: 8.1/8.2 DAYLIGHT AND VIEWS 					
COLOUR OPTIONS				CASSETTE FINISHES AVAILABLE: WHITE, LINEN, ANODIZED, LIGHT BRONZE, DARK BRONZE, BLACK					
SCALE:	NONE	DWG NUMBER:	V-CH-FB-01	DATE:	OCTOBER 7, 2015	REV:	2	DRAWN BY:	M.E.



VISION™ ROLLER SHADE SYSTEMS

V-84 & V-102

Chain Operated System: Drive Mechanism



V1 CLUTCH - STANDARD

- STANDARD DUAL CLUTCH FOR MANUAL CHAIN OPERATED SHADES (DRIVE & IDLE END) ALLOWS THE DRIVE SIDE TO BE SWITCHED ON SITE WITHOUT DISMANTLING THE SHADE
- SIMULTANEOUS CHAIN OPTION ON BOTH SIDES (OPTIONAL)
- CLUTCH GUIDE WHEEL MINIMISES TELESOPING & FRAYED FABRIC EDGES
- CLUTCH & SPRING COMBINATION PROVIDES A SMOOTH AND EFFORTLESS OPERATION, RELIEVES STRESS ON THE CHAIN AND SPROCKET, ELIMINATING CHAIN BREAKAGE
- SELF LUBRICATING DELRIN MATERIAL REDUCES FRICTION AND EXTENDS THE LIFE OF ALL MOVEABLE COMPONENTS
- HARDENED COIL SPRING OPTIMIZES TENSILE STRENGTH AND TORQUE POWER TO MAINTAIN PRODUCT QUALITY OVER TIME
- COUNTER BALANCE SYSTEM ALLOWS THE SHADE TO BE PULLED DOWN BY THE BOTTOM BAR WITHOUT DAMAGING THE CLUTCH

VISION - LIFT ASSIST MECHANISM (LAM)

- LIFT ASSIST MECHANISM REDUCES REQUIRED PULL FORCE FOR FINGER TIP CONTROL EVEN ON LARGE SHADES

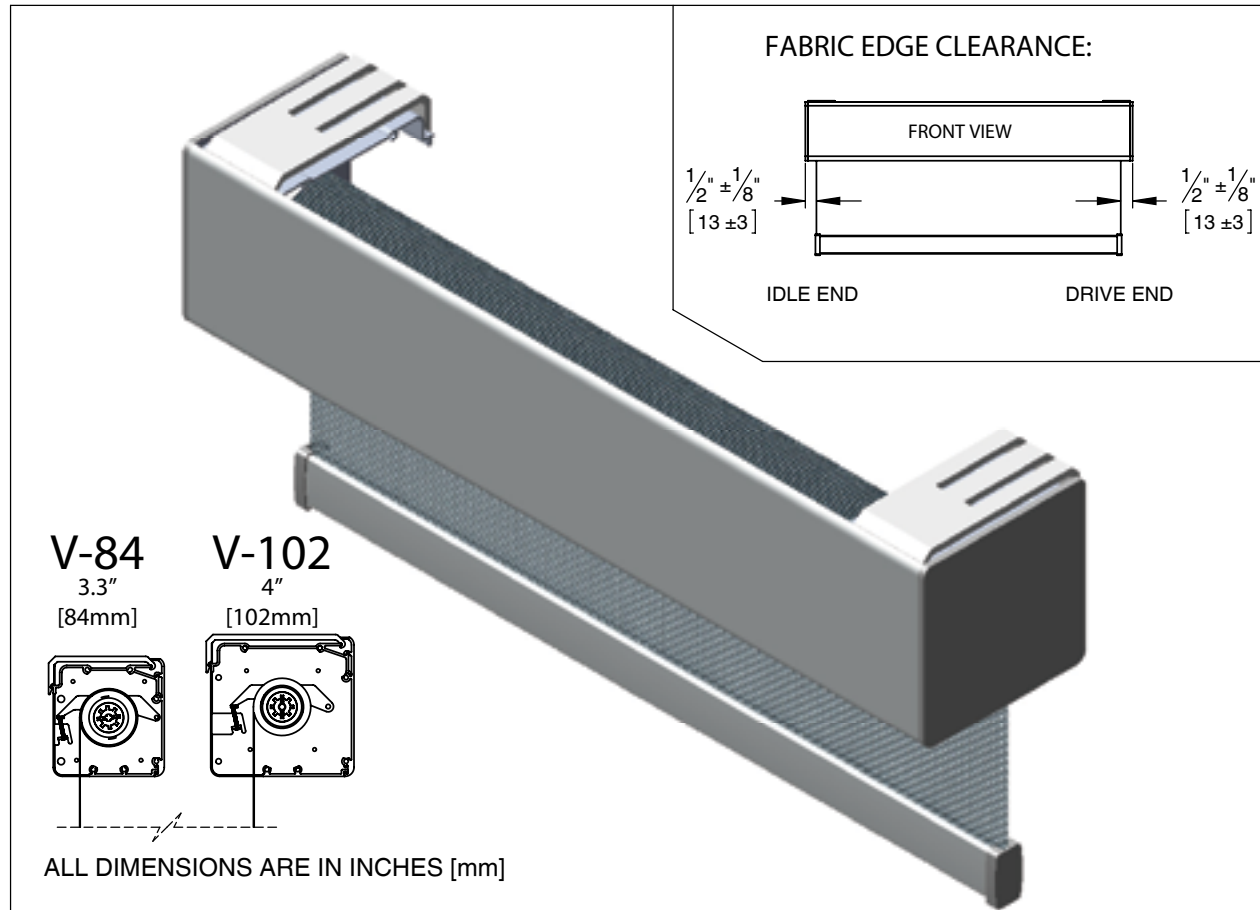
SCALE:	NONE	DWG NUMBER:	V1-CL-OPT-01	DATE:	OCTOBER 7, 2015	REV:	4	DRAWN BY:	M.E.
--------	------	-------------	--------------	-------	-----------------	------	---	-----------	------



VISION™ ROLLER SHADE SYSTEMS

V-84 & V-102

Neo Chainless System: Features & Benefits



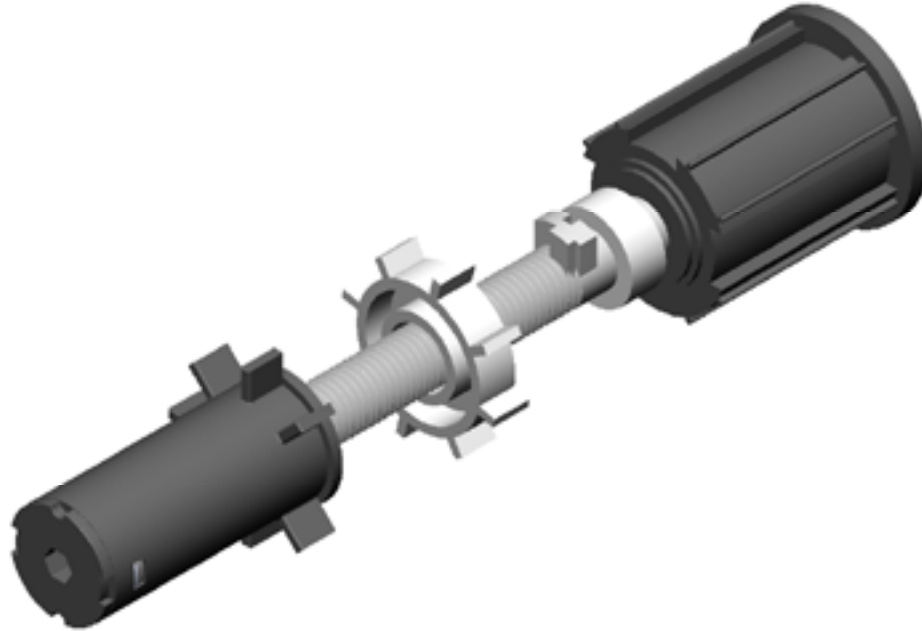
FEATURES				BENEFITS					
CHAINLESS				SHADE IS OPERATED BY PULLING THE BOTTOM BAR, ELIMINATES CHAIN AND LIGATURE ISSUE					
LIFT ASSIST MECHANISM (LAM) + NEO SPEED REDUCER				ALLOWS FOR SMOOTH OPERATION IN BOTH THE UP AND DOWN MOTION					
SNAP-ON BRACKETS				QUICK AND EASY INSTALLATION & REMOVAL WITHOUT DISMANTLING THE SHADE					
MODULAR DESIGN				WIDE VARIETY OF VALANCE CONFIGURATIONS FOR OPTIMAL PERFORMANCE & COST EFFECTIVENESS					
MINIMAL & SYMMETRICAL LIGHT GAP				OFFERS GREATER SOLAR CONTROL AND A BALANCED APPEARANCE					
COMPLETELY ASSEMBLED UNIT				SHADE IS BALANCED & TESTED DURING MANUFACTURING TO ENSURE PROPER PERFORMANCE BEFORE & AFTER INSTALLATION					
BUILT IN LEVELLING SYSTEM				DRIVE & IDLE ENDS CAN BE LEVELED AFTER INSTALLATION TO COMPENSATE FOR UNEVEN MOUNTING CONDITIONS					
VISION™ MEETS THE FOLLOWING LEED POINT CRITERIA				<ul style="list-style-type: none"> • MR CREDIT: 4.1/4.2 RECYCLED CONTENT • MR CREDIT: 5.1/5.2 REGIONAL MATERIALS • EQ CREDIT: 8.1/8.2 DAYLIGHT AND VIEWS 					
COLOUR OPTIONS				CASSETTE FINISHES AVAILABLE: WHITE, LINEN, ANODIZED, LIGHT BRONZE, DARK BRONZE, BLACK					
SCALE:	NONE	DWG NUMBER:	V-NEO-FB-01	DATE:	OCTOBER 7, 2015	REV:	1	DRAWN BY:	M.E.



VISION™ ROLLER SHADE SYSTEMS

V-84 & V-102

Neo Chainless System: Drive Mechanism



1.5" [38.1MM] NEO SPEED REDUCER - STANDARD

- DOES NOT REQUIRE CHAIN
- CAN EASILY BE OPERATED BY PULLING THE SHADE FROM THE CENTER OF THE BOTTOM BAR OR BLIND PULL TO THE DESIRED HEIGHT
- CAN EASILY BE RETRACTED BY A SLIGHT PULL OF THE BOTTOM BAR OR BLIND PULL
- SMART LOCK AND SNAP RELEASE ALLOW FOR EASY DISMOUNTING WHEN REQUIRED

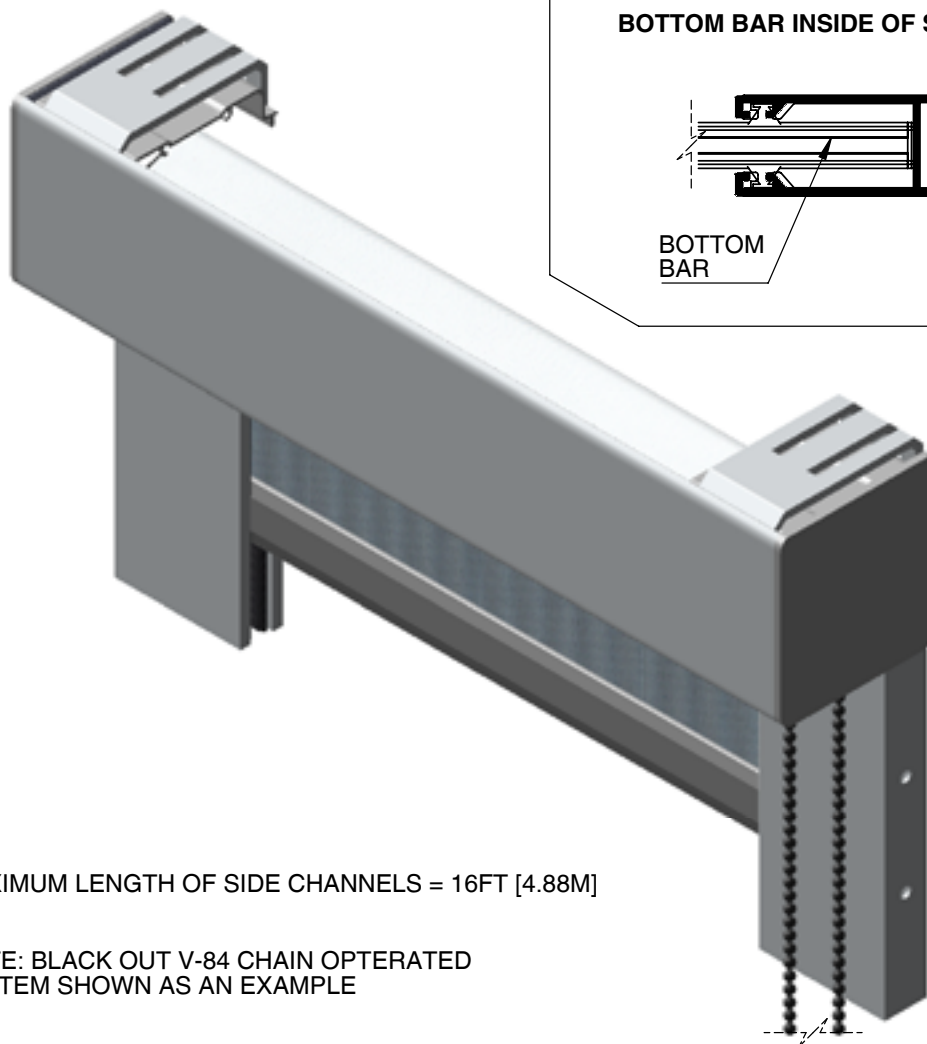
SCALE:	NONE	DWG NUMBER:	NEO-CL-OPT-01	DATE:	OCTOBER 7, 2015	REV:	0	DRAWN BY:	M.E.
--------	------	-------------	---------------	-------	-----------------	------	---	-----------	------



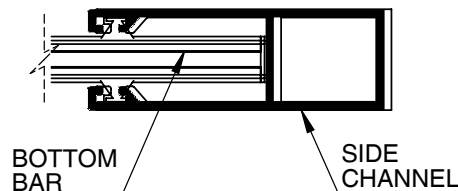
VISION™ ROLLER SHADE SYSTEMS

V-84 & V-102

Blackout System: Features & Benefits



BOTTOM BAR INSIDE OF SIDE CHANNEL



MAXIMUM LENGTH OF SIDE CHANNELS = 16FT [4.88M]

NOTE: BLACK OUT V-84 CHAIN OPERATED SYSTEM SHOWN AS AN EXAMPLE

FEATURES		BENEFITS							
BLACK OUT		ELIMINATES 99% OF DIRECT LIGHT. NOTE: A SMALL AMOUNT OF INDIRECT LIGHT MAY STILL BE VISIBLE							
DIFFERENT BOTTOM BAR OPTIONS		SLIM BAR AND PLAIN HEM ARE REQUIRED IN ORDER TO GLIDE EFFORTLESSLY THROUGH THE CHANNELS							
DIFFERENT MOUNTING OPTIONS		CHANNELS CAN BE LATERAL OR FACE MOUNTED AND ARE PRE-DRILLED TO SPECIFICATION BASED ON THE MOUNTING STYLE							
BOTTOM CHANNEL(OPTIONAL)		REDUCES LIGHT PENETRATION FROM WINDOW LEDGE							
SYSTEM FLEXIBILITY		SIDE CHANNELS CAN BE USED WITH CHAIN OPERATED OR MOTORIZED ROLLER SHADE SYSTEMS							
SCALE:	NONE	DWG NUMBER:	BO-V-FB-01	DATE:	SEPTEMBER 30, 2015	REV:	10	DRAWN BY:	M.E.

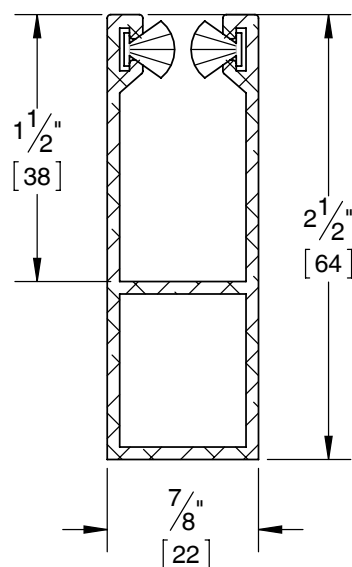
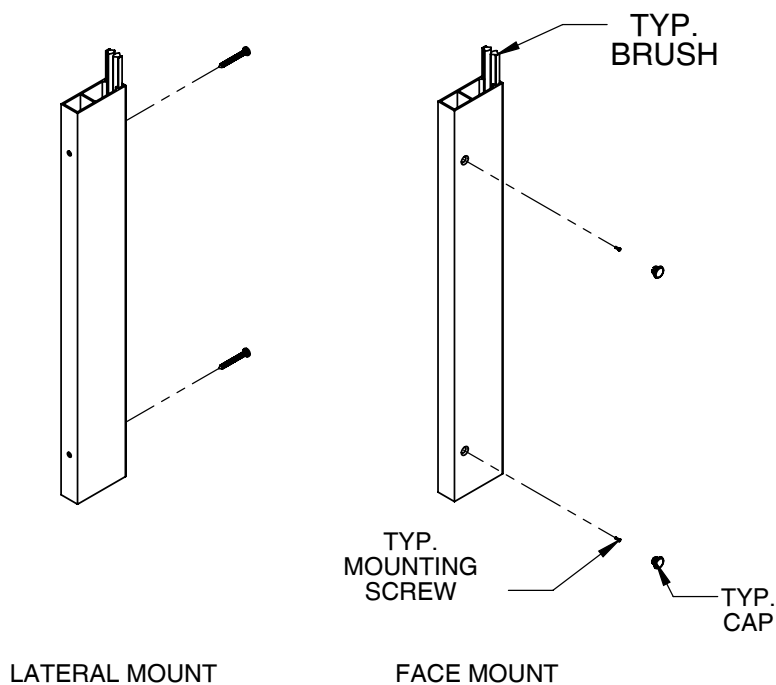


VISION™ ROLLER SHADE SYSTEMS

V-84 & V-102

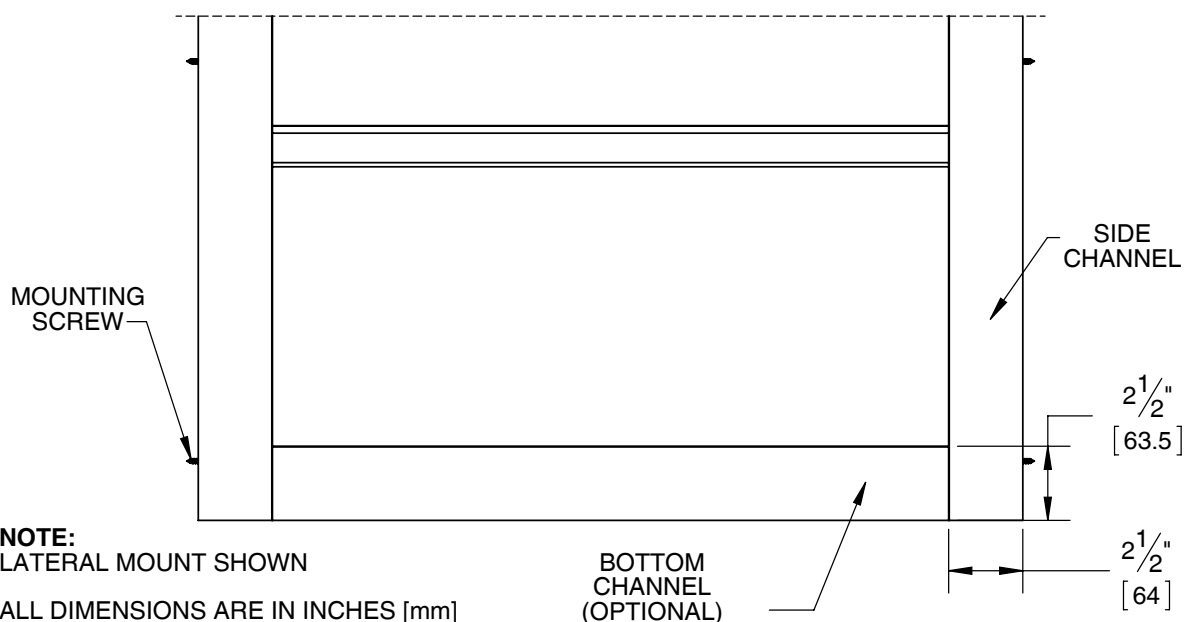
Blackout System: Mounting Details

ISOMETRIC VIEW - CHANNEL



SECTION VIEW

FRONT VIEW



SCALE:	NONE	DWG NUMBER:	BO-V-MD-01	DATE:	OCTOBER 8, 2015	REV:	10	DRAWN BY:	M.E.
--------	------	-------------	------------	-------	-----------------	------	----	-----------	------

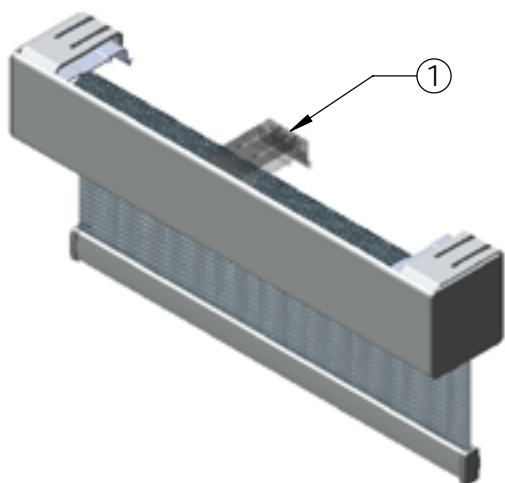


VISION™ ROLLER SHADE SYSTEMS

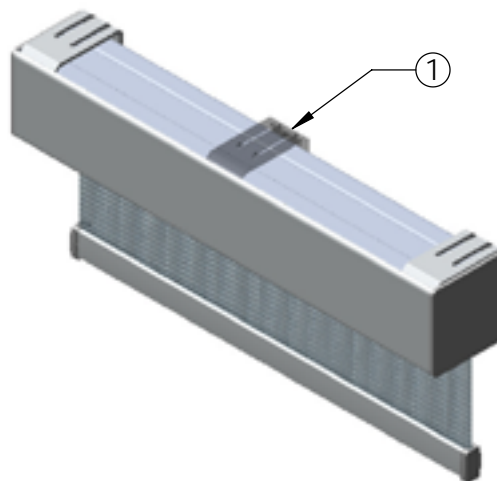
V-84 & V-102

Product Information: Fascia Configurations

STANDARD:
TWO ASSEMBLY BRACKETS FOR V-84 & V-102

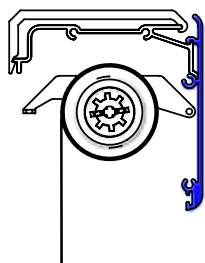


OPTIONAL:
TOP COVER FOR V-84 & V-102

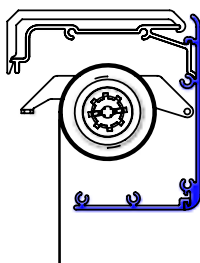


① NOTE:
ADDITIONAL BRACKET MAY BE INCLUDED FOR MOUNTING OVERSIZED SHADES

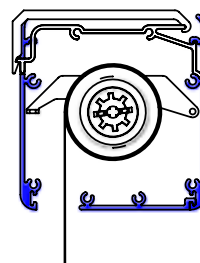
V-84 & V-102 FASCIA OPTIONS: REGULAR ROLL



FRONT
FASCIA

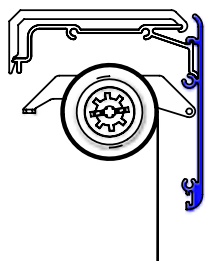


FRONT &
RETURN
FASCIA

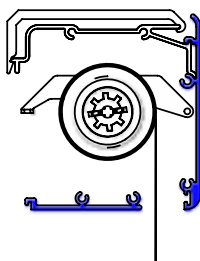


FRONT,
RETURN &
BACK
FASCIA

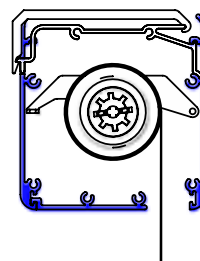
V-84 & V-102 FASCIA OPTIONS: REVERSE ROLL



FRONT
FASCIA



FRONT &
RETURN
FASCIA



FRONT,
RETURN &
BACK
FASCIA

SCALE:	NONE	DWG NUMBER:	V-NEO-FC-01	DATE:	OCTOBER 7, 2015	REV:	0	DRAWN BY:	M.E.
--------	------	-------------	-------------	-------	-----------------	------	---	-----------	------

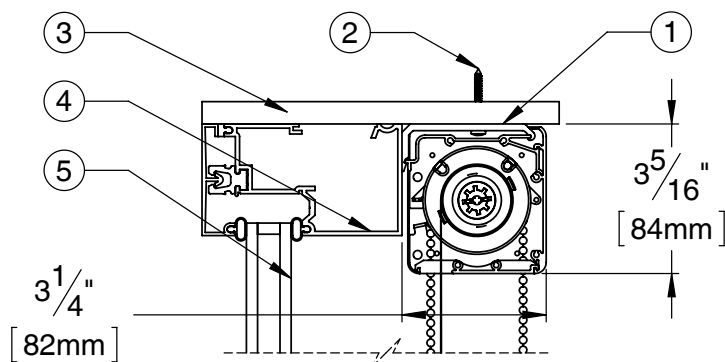


VISION™ ROLLER SHADE SYSTEMS

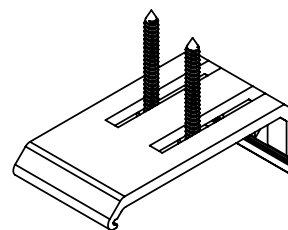
V-84 & V-102

Product Information: Mounting Details

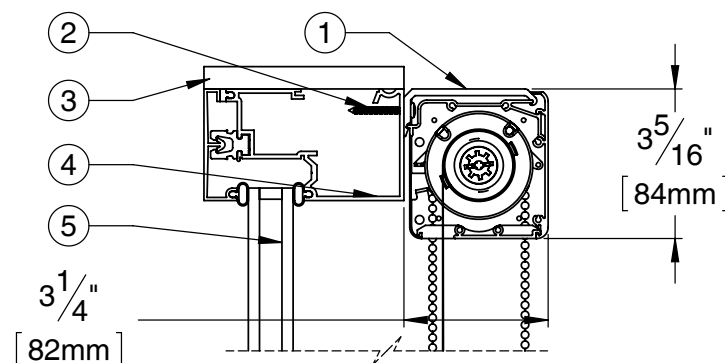
CEILING MOUNT



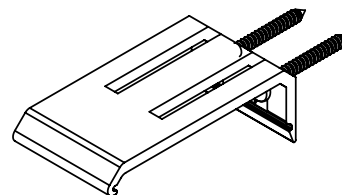
PROFILE VIEW
V-84 MOUNTING BRACKET
&
CEILING MOUNT-SCREW LOCATION



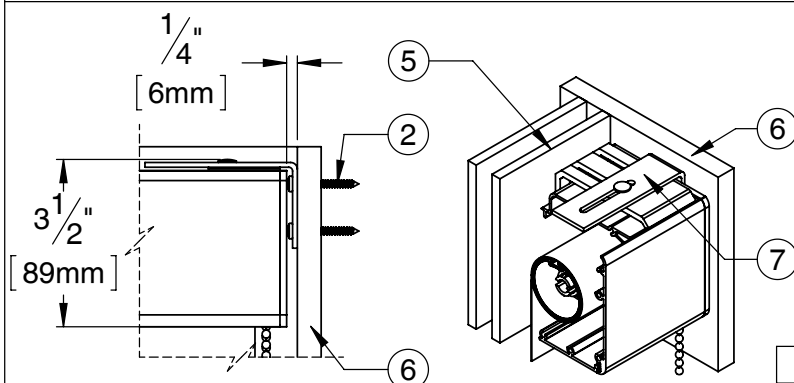
WALL OR FACE MOUNT



PROFILE VIEW
V-84 MOUNTING BRACKET
&
WALL MOUNT-SCREW LOCATION



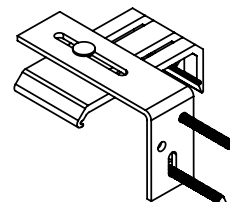
LATERAL MOUNT



NOTE:
SOME COMPONENTS ARE NOT DISPLAYED IN THE MOUNTING VIEWS ABOVE.
LATERAL MOUNT INCREASES LIGHT GAP BY MINIMUM 3/8" [10mm] PER SIDE.

ALL DIMENSIONS ARE IN INCHES [mm]

PROFILE VIEW
V-84 MOUNTING BRACKET
&
LATERAL MOUNT-SCREW LOCATION



ITEM NO.	COMPONENT
1	V-84 MOUNTING BRACKET
2	1.5" MOUNTING SCREW
3	CEILING
4	MULLION
5	GLAZING
6	DRYWALL
7	LATERAL MOUNTING BRACKET

SCALE:	NONE	DWG NUMBER:	V-84-CH-MD-01	DATE:	SEPTEMBER 16, 2015	REV:	2	DRAWN BY:	M.E.
--------	------	-------------	---------------	-------	--------------------	------	---	-----------	------



VISION™ ROLLER SHADE SYSTEMS

V-84 & V-102

Product Information: Mounting Details

CEILING MOUNT

Technical drawing of a ceiling mount. It shows a side view of the mounting bracket (1) attached to a ceiling (3) with a 1.5" mounting screw (2). The bracket is 4 1/8" [105mm] high. The roller housing (4) is 4" [102mm] high. A mullion (5) is shown passing through the bracket. A dashed line indicates the light gap.

PROFILE VIEW V-102 MOUNTING BRACKET & CEILING MOUNT-SCREW LOCATION

3D perspective view of the ceiling mount bracket (1) showing the location of the 1.5" mounting screws (2) in the ceiling (3).

WALL OR FACE MOUNT

Technical drawing of a wall or face mount. It shows a side view of the mounting bracket (1) attached to a wall (3) with a 1.5" mounting screw (2). The bracket is 4 1/8" [105mm] high. The roller housing (4) is 4" [102mm] high. A mullion (5) is shown passing through the bracket. A dashed line indicates the light gap.

PROFILE VIEW V-102 MOUNTING BRACKET & WALL MOUNT-SCREW LOCATION

3D perspective view of the wall mount bracket (1) showing the location of the 1.5" mounting screws (2) in the wall (3).

LATERAL MOUNT

Technical drawing of a lateral mount. It shows a side view of the lateral mounting bracket (7) attached to a drywall (6) with a 1.5" mounting screw (2). The bracket is 1/4" [6mm] thick and 4 1/8" [105mm] high. A mullion (5) is shown passing through the bracket. A dashed line indicates the light gap.

PROFILE VIEW V-102 MOUNTING BRACKET & LATERAL MOUNT-SCREW LOCATION

3D perspective view of the lateral mount bracket (7) showing the location of the 1.5" mounting screws (2) in the drywall (6).

NOTE:
SOME COMPONENTS ARE NOT DISPLAYED IN THE MOUNTING VIEWS ABOVE.
LATERAL MOUNT INCREASES LIGHT GAP BY MINIMUM 3/8" [10mm] PER SIDE.

ALL DIMENSIONS ARE IN INCHES [mm]

ITEM NO.	COMPONENT
1	V-102 MOUNTING BRACKET
2	1.5" MOUNTING SCREW
3	CEILING
4	MULLION
5	GLAZING
6	DRYWALL
7	LATERAL MOUNTING BRACKET

SCALE: NONE DWG NUMBER: V-102-CH-MD-01 DATE: SEPTEMBER 16, 2015 REV: 2 DRAWN BY: M.E.