



# Gemini Dual Roller Shades

## Installation Instructions

### Ceiling or Lateral Mount (Inside/Partial-Inside)



FOR INSTALLATION OF DUAL SHADES WITH CEILING, INSIDE, OR PARTIAL-INSIDE MOUNT, THE BRACKETS AND FASCIA MUST BE PRE-ASSEMBLED BEFORE THE BRACKETS ARE MOUNTED.

1

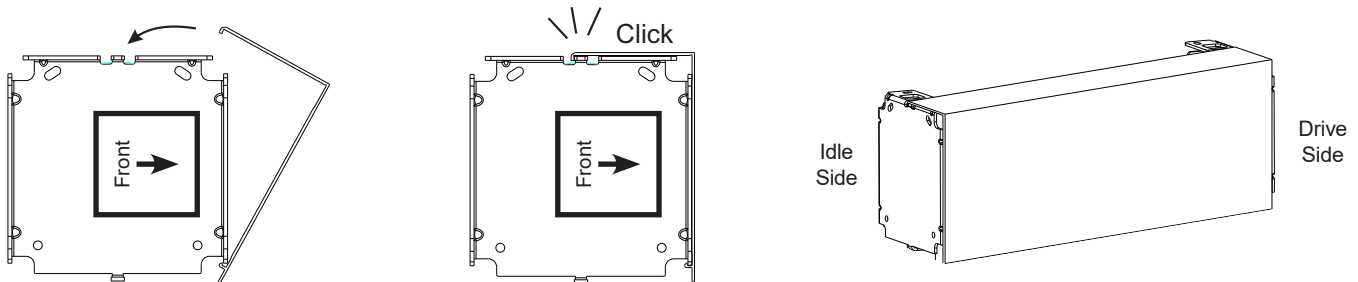
### FASCIA ASSEMBLY AND INSTALLATION



ENSURE YOU MATCH THE APPROPRIATE ASSEMBLY FOR THE DRIVE SIDE AND THE IDLE END. THE ROLLER SHADES CANNOT BE INSTALLED SECURELY IF THE ASSEMBLIES ARE SWITCHED.



Attach the fascia to each bracket by hooking the lip of the long side of the fascia onto the bottom front tab of the bracket. Swing the fascia panel up over the bracket and firmly press the lip of the short side of the panel until the fascia engages the center top tab of the bracket.

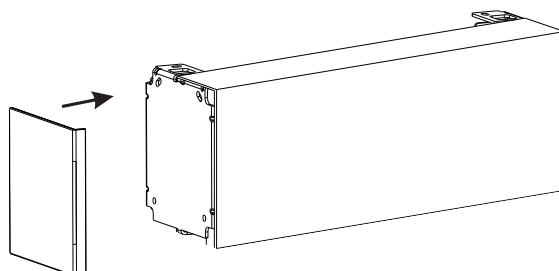


2

### OPTIONAL: END CAP ASSEMBLY

**NOTE: The end caps cannot be used when laterally mounting brackets.**

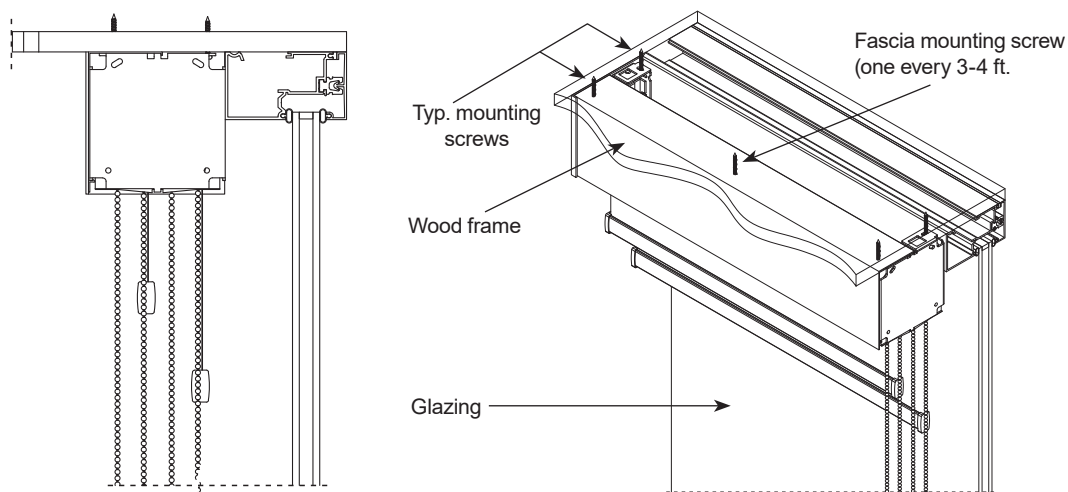
If using end caps, make sure they are attached before installing the assembly inside the window frame. Snap end caps over the brackets and fascia.



### 3 MOUNTING DETAILS

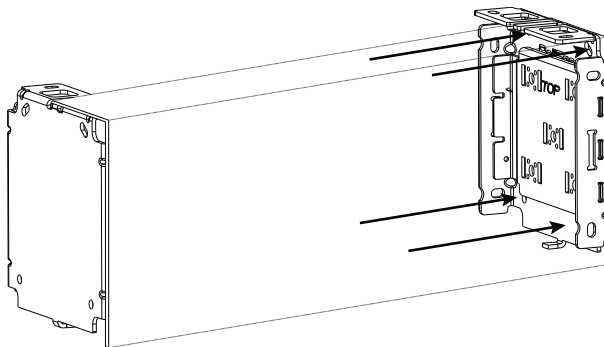
#### CEILING

The fascia/bracket assembly is then installed into the desired location. When ceiling mounting, the fascia mounting screws are driven through the fascia top return to temporarily hold the brackets up. The brackets must be installed securely to support the roller shade system.



#### LATERAL

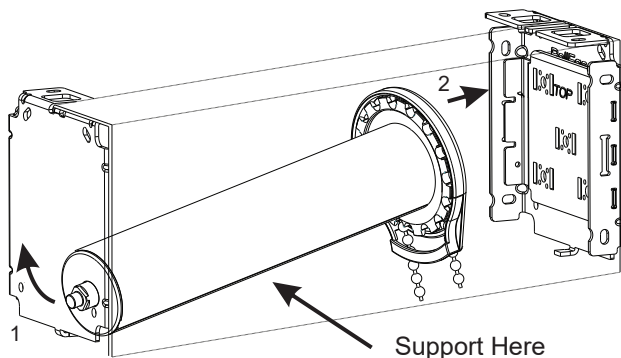
For lateral mounting, use the holes provided on the bracket. Install brackets as required using proper anchors and fasteners.



### 4 ROLLER SHADE INSTALLATION

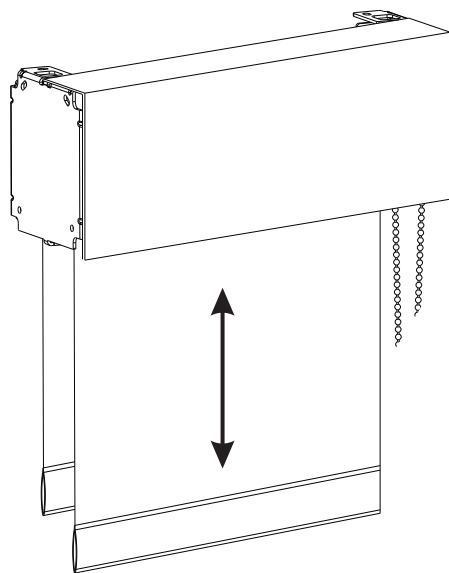
Once the fascia/bracket set is securely fastened in place, install the shades beginning with the one closest to the window glazing in the upper or lower position. With each shade, install the idle end first and then the drive end.

Be certain to support the drive end of the shade as the idler end is installed. The shades should not be supported by the clutch alone as this could cause damage to the clutch. The installation team should support the shade as it is being completely seated into the bracket set.



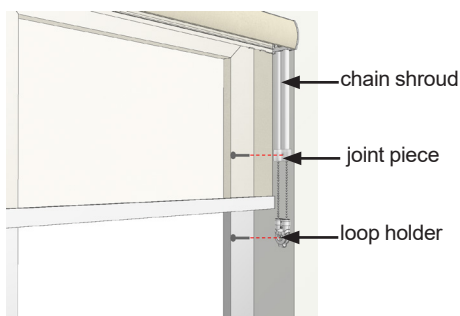
## 5 TESTING PERFORMANCE

Lower and raise the shades to confirm smooth operation including proper setting of stops. Check before and after installing tension devices.



## 6 CHAIN TENSION DEVICES

Chain tension devices should be carefully and properly installed.



**The loop holder and joint piece must be affixed to a wall or window frame.**

**Gently pull the loop holder taut and affix with a screw, then ensure that the chain shroud is raised before installing the joint piece with another screw.**



# Gemini Dual Roller Shades

## Installation Instructions

### Wall Mount (Outside or Open Wall)



THE FASCIA CAN BE SNAPPED ON AFTER THE BRACKETS ARE INSTALLED.

1

### FASCIA ASSEMBLY AND INSTALLATION



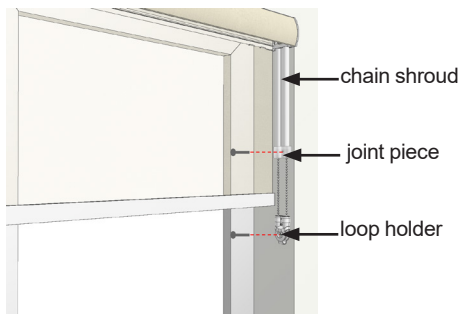
ENSURE YOU MATCH THE APPROPRIATE ASSEMBLY FOR THE DRIVE SIDE AND THE IDLE END. THE ROLLER SHADES CANNOT BE INSTALLED SECURELY IF THE ASSEMBLIES ARE SWITCHED.



2

### BRACKET INSTALLATION

For wall mounting, use the holes provided on the bracket. Install brackets as required using proper anchors and fasteners.



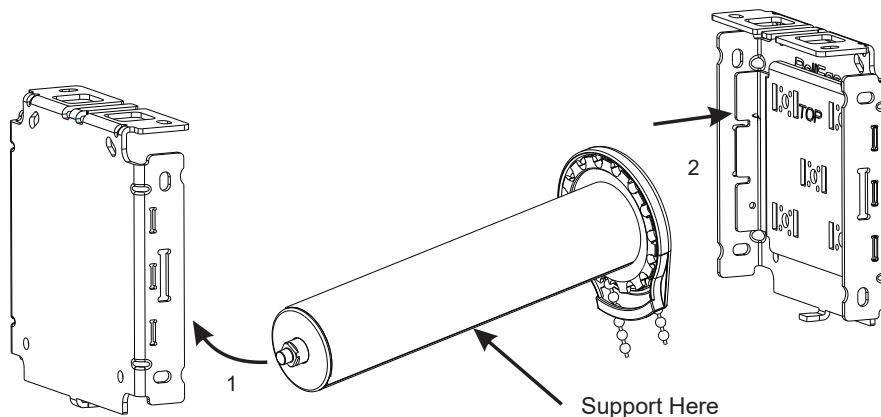
The loop holder and joint piece must be affixed to a wall or window frame.

Gently pull the loop holder taut and affix with a screw, then ensure that the chain shroud is raised before installing the joint piece with another screw.

### 3 ROLLER SHADE INSTALLATION

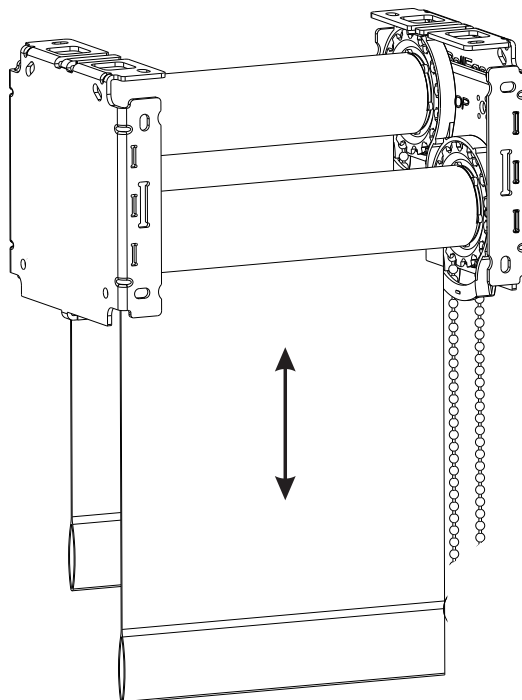
Once the fascia/bracket set is securely fastened in place, install the shades beginning with the one closest to the window glazing in the upper or lower position. With each shade, install the idle end first, and then the drive side.

Be certain to support the drive end of the shade as the idler end is installed. The shades should not be supported by the clutch alone as this could cause damage to the clutch. The installation team should support the shade as it is being completely seated into the bracket set.



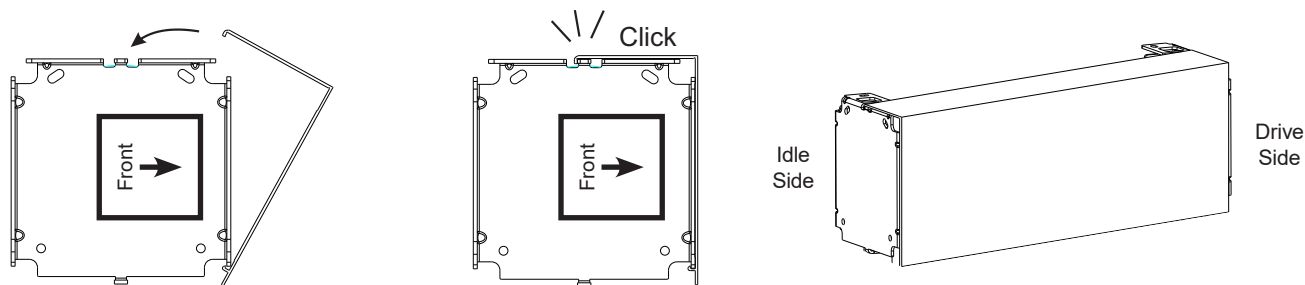
### 4 TESTING PERFORMANCE

Lower and raise the shades to confirm smooth operation including proper setting of the stops. Confirm control chains are routed properly. Check before and after installing tension devices



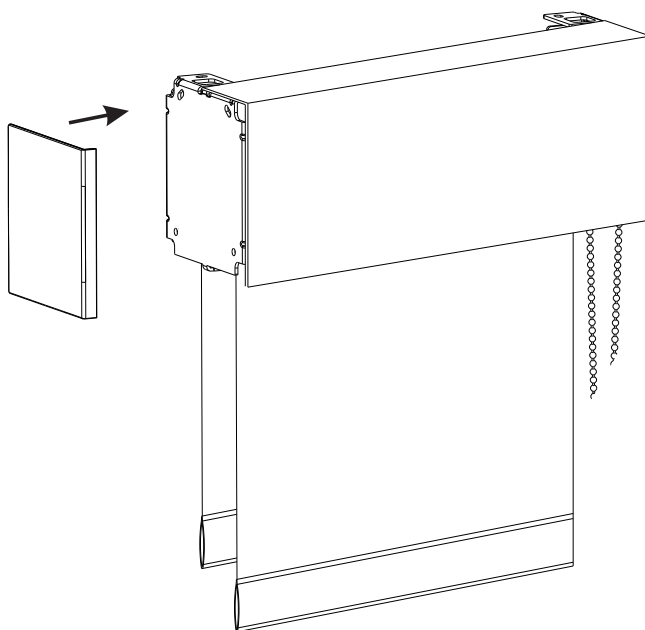
## 5 FASCIA ASSEMBLY

Attach the fascia to each bracket by hooking the lip of the long side of the fascia onto the bottom front tab of the bracket. Swing the fascia panel up over the bracket and firmly press the lip of the short side of the panel until the fascia engages the center top tab of the bracket.

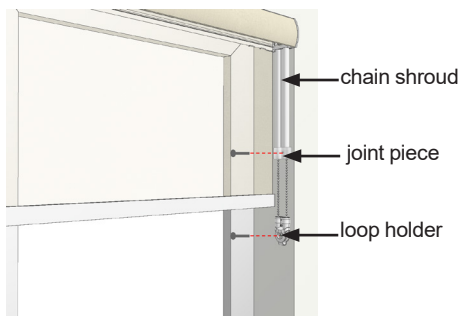


## 6 OPTIONAL: END CAP ASSEMBLY

If using end caps, snap end caps over brackets and fascia.



## 7 CHAIN TENSION DEVICES



**The loop holder and joint piece must be affixed to a wall or window frame.**

**Gently pull the loop holder taut and affix with a screw, then ensure that the chain shroud is raised before installing the joint piece with another screw.**